



PILKINGTON ESTATES  
PROPERTY CONSULTANTS

**Victoria Road, Dartmouth, Devon, TQ6**

**Offers Over: £550,000**

*Freehold*



# Victoria Road, Dartmouth, Devon, TQ6

This stunning four-bedroom, three-storey family home is located in a highly desirable area close to the beautiful Blackpool Sands Beach and just a short drive from Dartmouth Golf Club. The property is presented to an exceptional standard, effortlessly combining modern fixtures and fittings with a wealth of period charm and character throughout.

On the ground floor, the spacious lounge flows into a generous family-sized dining room, ideal for both everyday living and entertaining. To the rear of the home, a contemporary kitchen, breakfast, and family area becomes the true heart of the property. This stylish space is fitted with high-quality integrated Neff appliances, underfloor heating, and is filled with natural light thanks to a large skylight and bi-fold doors that open out to the decked terrace, landscaped gardens, and rear driveway.

Upstairs, the first floor offers a luxurious four-piece contemporary bath and shower room, an additional W.C., and a large double bedroom. Also on this level is the elegant principal bedroom, complete with a sleek en-suite shower room. The second-floor features two further well-proportioned double bedrooms and another modern shower room, providing ample accommodation for family and guests.

The garden, accessed directly from the kitchen and family area, features a spacious decked terrace perfect for outdoor dining and entertaining. Designed with low maintenance in mind, the garden is laid with artificial lawn and decorative stone shingle, creating a relaxing, usable space all year round. Beyond the garden lies the private rear driveway with flexible parking for multiple vehicles.

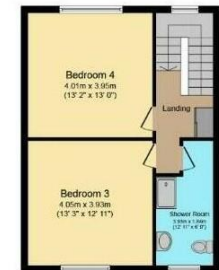
Dartmouth is a picturesque waterside town offering an excellent selection of both independent and well-known shops, a variety of dining options including restaurants, bistros, and cafes, and a welcoming community atmosphere. Its location makes it an ideal base for exploring the South Hams, with easy access to the River Dart and short ferry links to Brixham, Churston, and the wider Torbay area. This is a rare opportunity to own a beautifully appointed family home in one of Devon's most sought-after coastal settings. EPC: C



Ground Floor



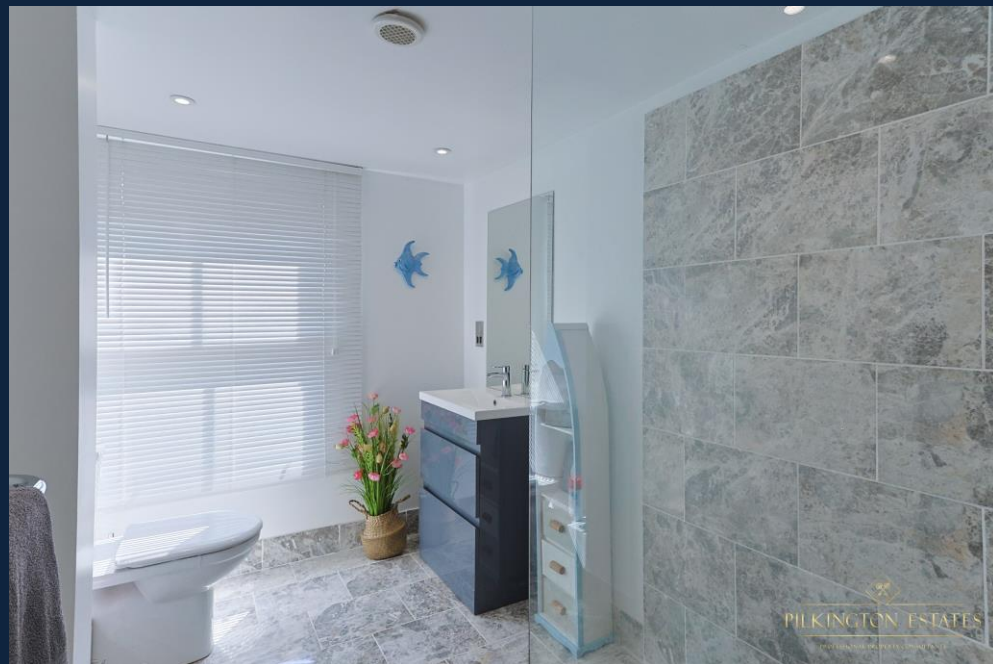
First Floor



Second Floor











## Pilkington Estates - Plymouth

Third Floor  
Unit 7  
Sutton Harbour  
Plymouth  
Devon  
PL4 0DN

T: 01752 729777  
E: [jon@pilkingtonestates.co.uk](mailto:jon@pilkingtonestates.co.uk)  
[www.pilkingtonestates.co.uk](http://www.pilkingtonestates.co.uk)