



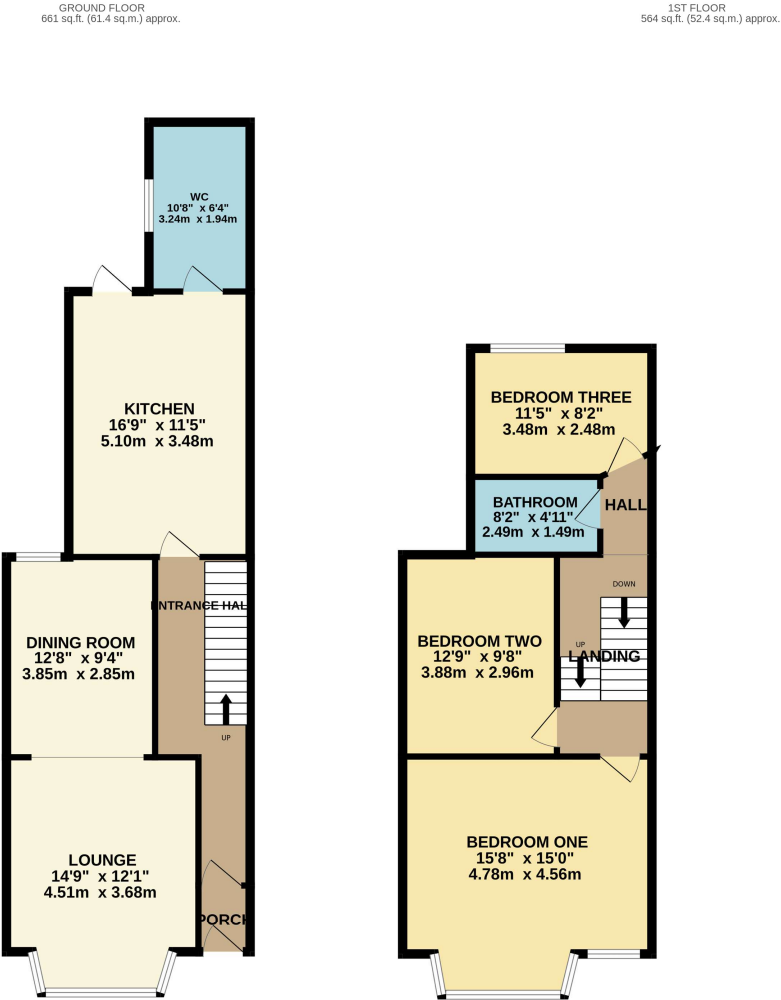
Tamerton Foliot Road, Plymouth, Devon, PL6

Offers Over: £325,000

Freehold

Nestled in the ever-popular PL6 area, Treetops offers the perfect blend of charm, space and future potential. This handsome 1930s three-bedroom semi-detached home sits proudly on a generous plot, surrounded by established greenery and set back from the road with a spacious driveway that easily accommodates multiple vehicles.

From the moment you arrive, the home’s character is evident — from the stripped wooden floors and coving details to the warm, natural light that floods in through bay windows and carefully placed glazing. The ground floor flows beautifully from a welcoming hallway through to the lounge, where traditional sliding doors open into a bright dining area and a modern kitchen beyond. There’s also a handy utility room and access to the rear garden, creating an easy and practical layout for everyday living. Upstairs, you’ll find two spacious double bedrooms, both with built-in storage, and a third bedroom ideal for a nursery, home office, or dressing room. The bathroom is fresh and modern whilst offering tasteful finishes. What truly sets this property apart is the potential. The former garage has already been removed, paving the way for a one or two-storey extension (subject to planning permission) — perfect for those looking to expand and create their forever home in a location that continues to grow in desirability. The garden and surrounding outdoor space offer privacy and room to breathe, while ultrafast broadband availability and good mobile coverage mean you're well connected too. With gas central heating, mains services, and level access into the home, comfort and convenience are already built in. Treetops needs to be seen to be fully appreciated — it’s a home with heart, character, and a future full of possibilities.



TOTAL FLOOR AREA: 1225 sq.ft. (113.8 sq.m.) approx.

Whilst every attempt has been made to ensure the accuracy of the floorplan contained herein, measurements of doors, windows, rooms and any other items are approximate and no responsibility is taken for any error, omission or mis-statement. This plan is for illustrative purposes only and should be used as such by any prospective purchaser. The services, systems and appliances shown have not been tested and no guarantee as to their operability or efficiency can be given.

Made with Metropix 6/2025





Pilkington Estates - Plymouth

Third Floor
Unit 7
Sutton Harbour
Plymouth
Devon
PL4 0DN

T: 01752 982783
E: jon@pilkingtonestates.co.uk
www.pilkingtonestates.co.uk

Jet Software Ltd. Registered in England and Wales - 15464498
Registered Office: Third Floor 67-74 Saffron Hill, London, EC1N 8QX

Disclaimer

Every attempt has been made to ensure accuracy, however these property particulars are approximate and for illustrative purposes only. They have been prepared in good faith and they are not intended to constitute part of an offer of contract. We have not carried out a structural survey and the services, appliances and specific fittings have not been tested. All photographs, measurements, floor plans and distances referred to are given as a guide only and should not be relied upon for the purchase of any fixture or fittings. Lease details, service charges and ground rent (where applicable) are given as a guide only and should be checked prior to agreeing a sale.