



**Crickleaze, Chard, Somerset, TA20**

**Guide Price: £2,500,000**

*Freehold*

# Crickleaze, Chard, Somerset, TA20

Welcome to Crickleaze House, a quintessential English country estate offering the perfect blend of luxury, comfort, and natural beauty. This substantial 5-bedroom detached family home, nestled within 30 acres of serene land, includes an additional charming 2-bedroom cottage, ideal for guests or extended family.

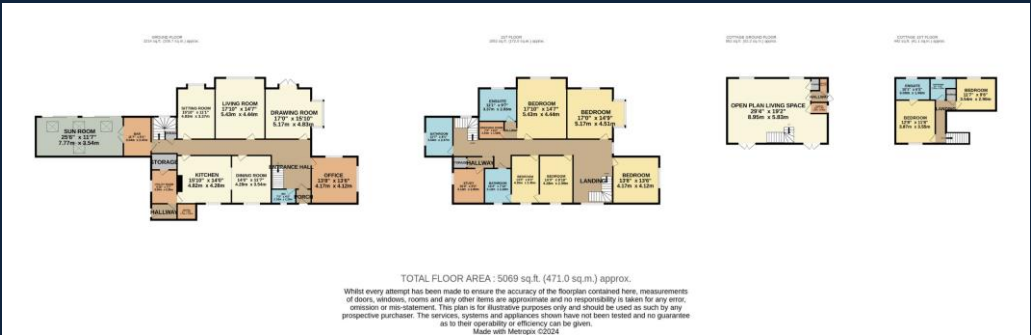
The main house boasts spacious, elegantly appointed rooms, including a grand living area, formal dining room, and a state-of-the-art kitchen perfect for culinary enthusiasts. Each bedroom provides a tranquil retreat with stunning views of the surrounding gardens.

Beyond the main residence, the property features extensive private amenities to enhance your lifestyle. 24 acres of private woodlands, perfect for nature walks, family activities or simply enjoying the peace and seclusion they provide. Equine fanatics will appreciate the well-equipped stables, while a picturesque pond offers a serene spot for relaxation.

For leisure and recreation, a sparkling swimming pool awaits, providing the perfect oasis for summer days as well as space for a home gym. The estate's additional features, including beautifully landscaped gardens and ample outdoor spaces, make it an ideal setting for entertaining guests or enjoying family time.

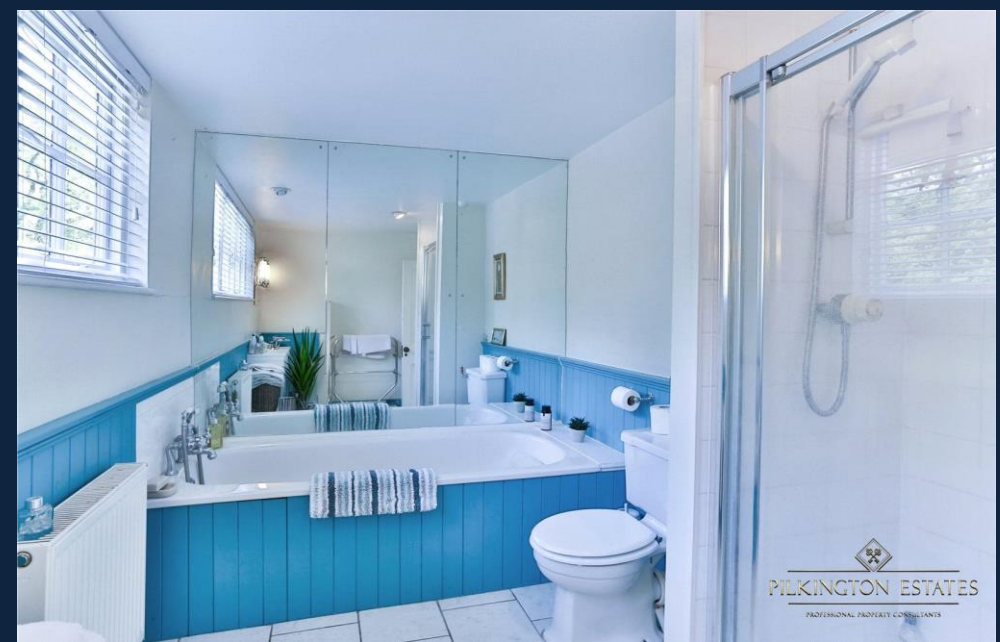
Crickleaze House is more than just a home; it's a sanctuary where luxury living meets the tranquillity of nature.

Located in a peaceful hamlet of similar aged properties, within easy reach of major transport links (A303/A358), viewing is highly recommended.

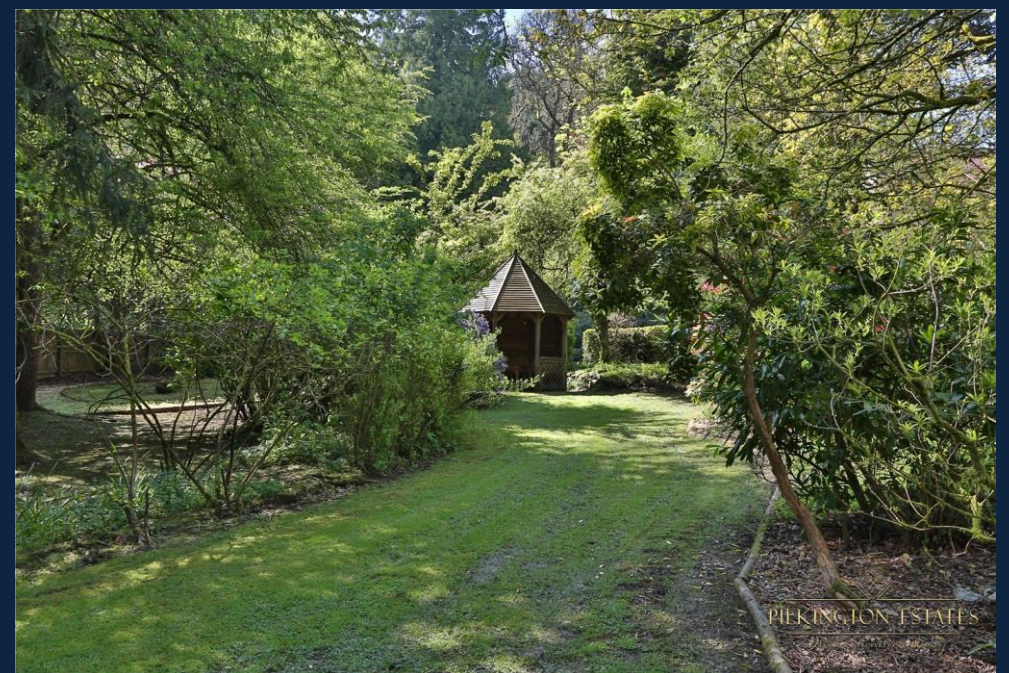














PILKINGTON ESTATES

PROFESSIONAL PROPERTY CONSULTANTS

