



DILKINGTON ESTATES

Lower Fore Street, Saltash, Cornwall, PL12

Offers Over: £425,000

Freehold

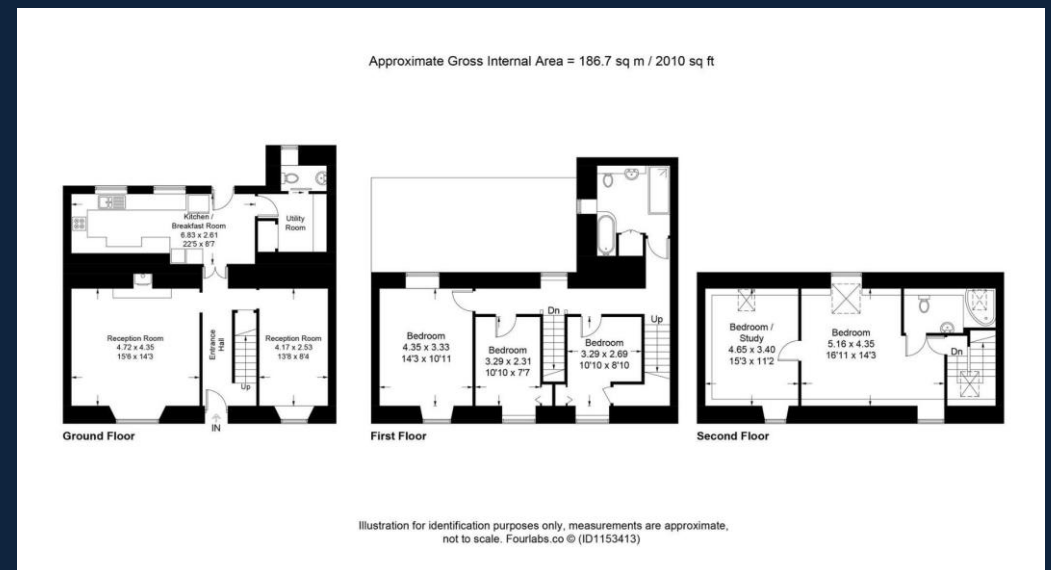
Lower Fore Street, Saltash, Cornwall, PL12

This spacious and versatile family home is spread over three floors, offering an abundance of natural light and stunning river views. The chain-free property features an attractive enclosed rear garden, creating a peaceful outdoor space.

Inside, the entrance hall leads to a well-appointed kitchen/breakfast room with a separate utility room. There are two reception rooms, one featuring a charming woodburning stove. The first floor includes a stylish four-piece family bathroom and three well-proportioned bedrooms. The second floor offers a spacious double bedroom with an en-suite, which connects to an additional room suitable for various uses.

Ideally positioned in a sought-after residential area of Saltash, this home overlooks the picturesque River Tamar and is just a short walk from the high street and local amenities. The nearby railway station provides convenient access to Plymouth City Centre and beyond, including London Paddington. For sailing enthusiasts, Saltash Sailing Club offers excellent facilities, with additional marinas at Mayflower, Sutton Harbour, and Queen Anne's Battery, home to the Royal Western Yacht Club. Plymouth, only 20 minutes away, boasts fantastic cultural attractions, including the Theatre Royal, the Barbican, and the National Marine Aquarium, along with great shopping and educational options.

The private and enclosed rear garden is mainly laid to lawn, complemented by a paved patio and mature shrubs, providing an inviting space for relaxation and outdoor enjoyment. EPC: D.











PILKINGTON ESTATES

PROFESSIONAL PROPERTY CONSULTANTS