



Valletort Road, Plymouth, Devon, PL1

Offers Over: £160,000

Leasehold

Situated in the quiet Endeavour Court development, Pilkington Estates are delighted to present for sale this fantastic two bedroomed first floor apartment. The property features a wealth of open plan living space, with floor to ceiling windows illuminating the room with natural light, creating the ideal space and atmosphere for spending time with family and friends with a modern fitted kitchen.

There is even a balcony where you can enjoy the summer breeze on those warm midsummer nights. This wonderful home offers 2 bedrooms, a bathroom, and en-suite. A garage is also included with the property benefitting from ample storage space, making this home perfect for first time buyers looking to get onto the property ladder or an avid investor looking to add an already diverse portfolio. EPC: C

Rooms

Entrance Hall 9'6" x 18'8" (2.9m x 5.7m). Laminate flooring, 2x storage cupboard, wall mounted gas radiator, double glazed window to front aspect, access to all rooms

Living Room 13' x 17' (3.96m x 5.18m). wooden flooring, 2x wall mounted gas radiator, double glazed patio doors leading to balcony, Tv point

Kitchen 8'10" x 8'11" (2.7m x 2.72m). wooden flooring, matching wall and base units, space for fridge / freezer, space for washer & dryer, integrated gas cooker with extractor fan above and oven below, double glazed window to rear aspect

Bathroom 5'9" x 6'10" (1.75m x 2.08m). Vinyl flooring, wall mounted towel rail, low level WC, wash hand basin with hot and cold mixer taps, bath with hot and cold mixer taps

Bedroom One 9'9" x 15' (2.97m x 4.57m). wooden flooring, wall mounted gas radiator, double glazed window to rear aspect, access to en suite

En-suite 5'2" x 5'11" (1.57m x 1.8m). Laminate flooring, wall mounted towel rail, low level WC, wash hand basin with hot and cold mixer taps, shower cubicle with electric shower, part tiled walls

Bedroom Two wooden flooring, wall mounted



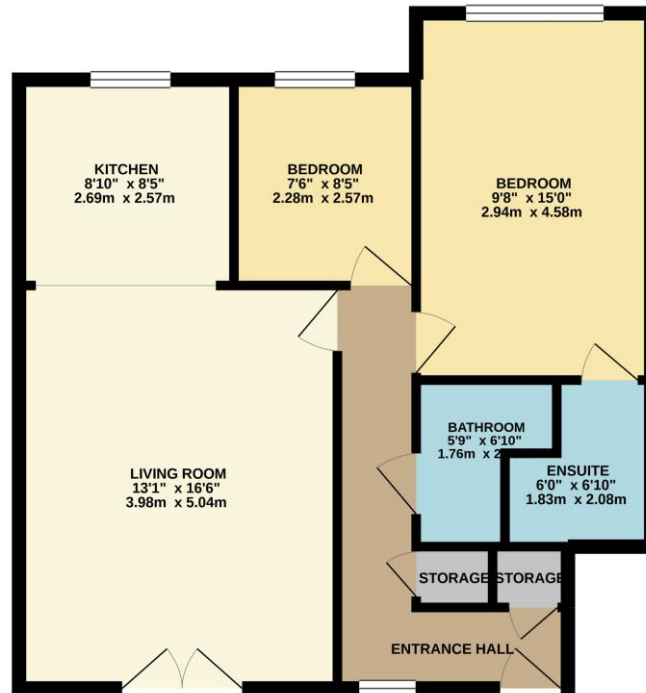


gas radiator, double
glazed window to rear aspect

Garage garage with storage cupboard



GROUND FLOOR
653 sq.ft. (60.7 sq.m.) approx.



TOTAL FLOOR AREA : 653 sq.ft. (60.7 sq.m.) approx.
Whilst every attempt has been made to ensure the accuracy of the floorplan contained here, measurements of doors, windows, rooms and any other items are approximate and no responsibility is taken for any error, omission or mis-statement. This plan is for illustrative purposes only and should be used as such by any prospective purchaser. The services, systems and appliances shown have not been tested and no guarantee as to their operability or efficiency can be given.
Made with Metropac ©2021.



Pilkington Estates - Plymouth
Third Floor, Unit 7, Sutton Harbour, Plymouth
Devon, PL4 0DN

T: 01752 729777
E: jon@pilkingtonestates.co.uk
www.pilkingtonestates.co.uk

Jet Software Ltd. Registered in England and Wales - 15464498
Registered Office: Third Floor 67-74 Saffron Hill, London, EC1N 8QX

Disclaimer

Every attempt has been made to ensure accuracy, however these property particulars are approximate and for illustrative purposes only. They have been prepared in good faith and they are not intended to constitute part of an offer of contract. We have not carried out a structural survey and the services, appliances and specific fittings have not been tested. All photographs, measurements, floor plans and distances referred to are given as a guide only and should not be relied upon for the purchase of any fixture or fittings. Lease details, service charges and ground rent (where applicable) are given as a guide only and should be checked prior to agreeing a sale.