



**Ash Thomas, Tiverton, Devon, EX16**

**Offers Over: £550,000**

*Freehold*



# Ash Thomas, Tiverton, Devon, EX16

As you approach down the long driveway, this stunning looking property immediately captures your attention with its striking cladding and exquisite stonework. Stepping through the front door into the inviting entrance hall, a staircase with a beautiful oak banister leads you to the first floor.

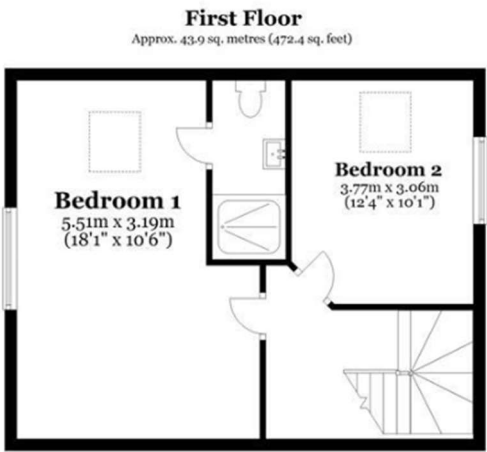
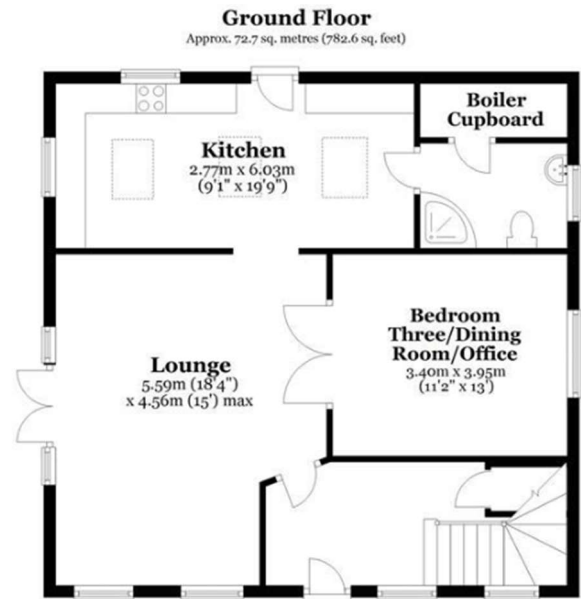
To the left, a charming ledge and brace door opens into a spacious lounge, bathed in natural light from large windows and patio doors. The porcelain wood-effect flooring, paired with underfloor heating throughout, complements the crisp white walls, creating a bright and airy haven—perfect for unwinding after a long day. Off the lounge is a versatile room that can function as a dining room, third bedroom, or home office. With the same stunning wood flooring, this space is ideal as a comfortable double bedroom, a dining area for six, or a home office with room for a sofa bed.

An open doorway from the lounge leads to the beautifully designed kitchen, crafted to the highest standards. Featuring elegant reed green wall and base units, a built-in oven, hob, and extractor fan, the kitchen also offers space for a washing machine and tumble dryer. The windows frame breathtaking views of the surrounding meadows and fields, while a door opens onto a gravelled outdoor area—a perfect spot to relax and enjoy the soothing sounds of nature.

From the kitchen, a door leads to the stylish downstairs shower room, complete with a corner shower cubicle, deep aqua brick-style tiling, a modern hand basin, and WC.

Upstairs, Bedroom One is a generously sized double room, offering ample space for bedroom furniture and picturesque views of your private meadow. A Velux-style window adds even more natural light to this charming retreat. The room also boasts an ensuite bathroom with a walk-in shower, WC, and sleek vanity unit. Bedroom Two is another spacious double room, also featuring a Velux-style window and stunning views overlooking the surrounding fields.

Outside, the meadow is a peaceful haven, seeded with wildflowers and offering plenty of space to bask in the sunshine. This outdoor oasis is the perfect setting to fully embrace the beauty of country living. EPC: B.



Total area: approx. 116.6 sq. metres (1254.9 sq. feet)  
This plan is for guidance only and is not to be relied upon. Measurements are approximate.  
Plan produced using PlanUp.





