



PILKINGTON ESTATES

Twickenham Street, Plymouth, Devon, PL2

Offers Over: £475,000

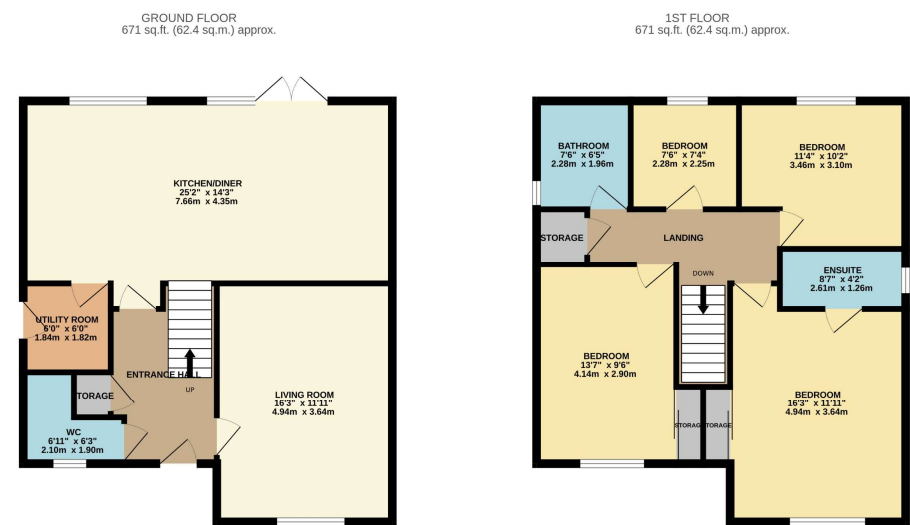
Freehold

Twickenham Street, Plymouth, Devon, PL2

This four-bedroom detached family home is situated in a fantastic catchment area and is only a minutes’ walk away from transport links. This property has been presented to an immaculate standard and is a credit to the current owners. Downstairs offers a generous living room which has been tastefully decorated as well as a large kitchen / dining room, flooded with natural light due to the large patio doors. The ground floor also offers a useful utility room and a downstairs Wc.

The standard of decoration continues upstairs, with four bedrooms, three of which are spacious doubles, one boasting a modern en suite. Upstairs also offers a contemporary family bathroom.

Externally the large family home continues to impress, with a level rear garden laid to all lawn, patio, and decking providing ample space for garden furniture for those who like to entertain in the heights of summer. The garden also comes equipped with an outdoor bar. The property is finished perfectly with a driveway and a single garage. EPC: B.



TOTAL FLOOR AREA: 1343 sq.ft. (124.7 sq.m.) approx.
Whilst every attempt has been made to ensure the accuracy of the floorplan contained here, measurements of doors, windows, rooms and any other items are approximate and no responsibility is taken for any error, omission or mis-statement. This plan is for illustrative purposes only and should be used as such by any prospective purchaser. The services, systems and appliances shown have not been tested and no guarantee as to their operability or efficiency can be given.
Made with Metropix ©2024





Pilkington Estates - Plymouth

Third Floor
Unit 7
Sutton Harbour
Plymouth
Devon
PL4 0DN

T: 01752 729777
E: jon@pilkingtonestates.co.uk
www.pilkingtonestates.co.uk

Jet Software Ltd. Registered in England and Wales - 09408958
Registered Office: Third Floor 67-74 Saffron Hill, London, EC1N 8QX

Disclaimer

Every attempt has been made to ensure accuracy, however these property particulars are approximate and for illustrative purposes only. They have been prepared in good faith and they are not intended to constitute part of an offer of contract. We have not carried out a structural survey and the services, appliances and specific fittings have not been tested. All photographs, measurements, floor plans and distances referred to are given as a guide only and should not be relied upon for the purchase of any fixture or fittings. Lease details, service charges and ground rent (where applicable) are given as a guide only and should be checked prior to agreeing a sale.