




PILKINGTON ESTATES

The Cleave, Kingsand, Torpoint, Cornwall, PL10

Guide Price: £900,000

The Cleave, Kingsand, Torpoint, Cornwall, PL10

Nestled within one of Cornwall's most iconic coastal villages, this historic Grade II listed property that stands proudly within one of Cornwall's most premier riverside locations. Offering approximately 2327 sq ft of accommodation, the property commands breathtaking views over Plymouth Sound, with landmarks like The Breakwater, The Mewstone, and The Rame Peninsula providing a mesmerizing backdrop.

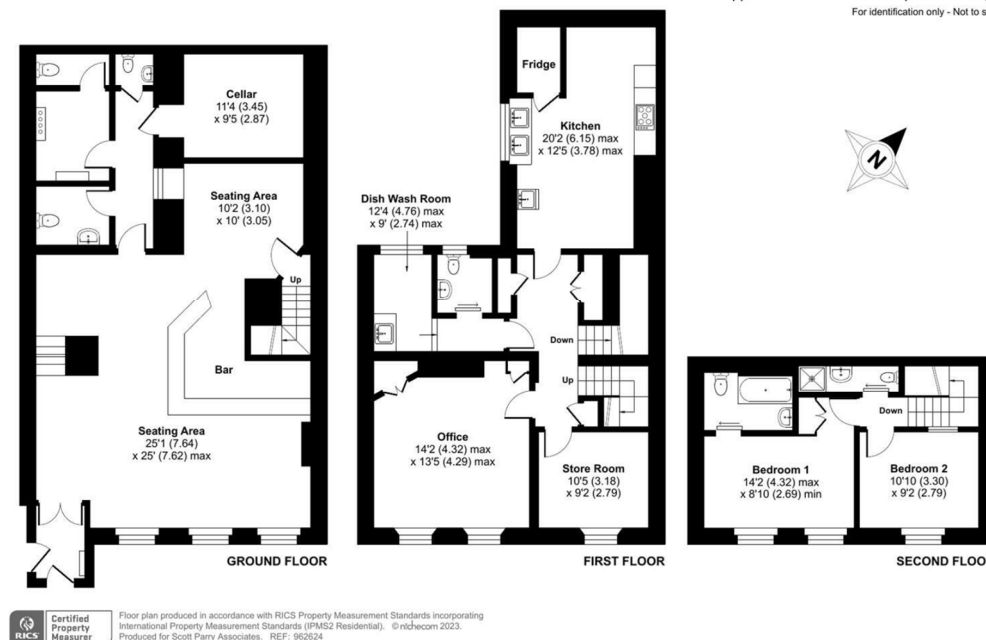
The interior boasts an open-plan bar and dining area capable of accommodating 30 patrons, complemented by a well-equipped commercial kitchen, cellar, and storage spaces. Three WCs contribute to the convenience of the establishment.

For the owners, a 2-bedroom accommodation is provided, ensuring a comfortable living space. The property extends its allure outdoors with a roof terrace and an outdoor seating area capable of hosting 20 covers. This unique combination of historical significance, coastal beauty, and commercial functionality makes this property a compelling opportunity for potential buyers or investors.

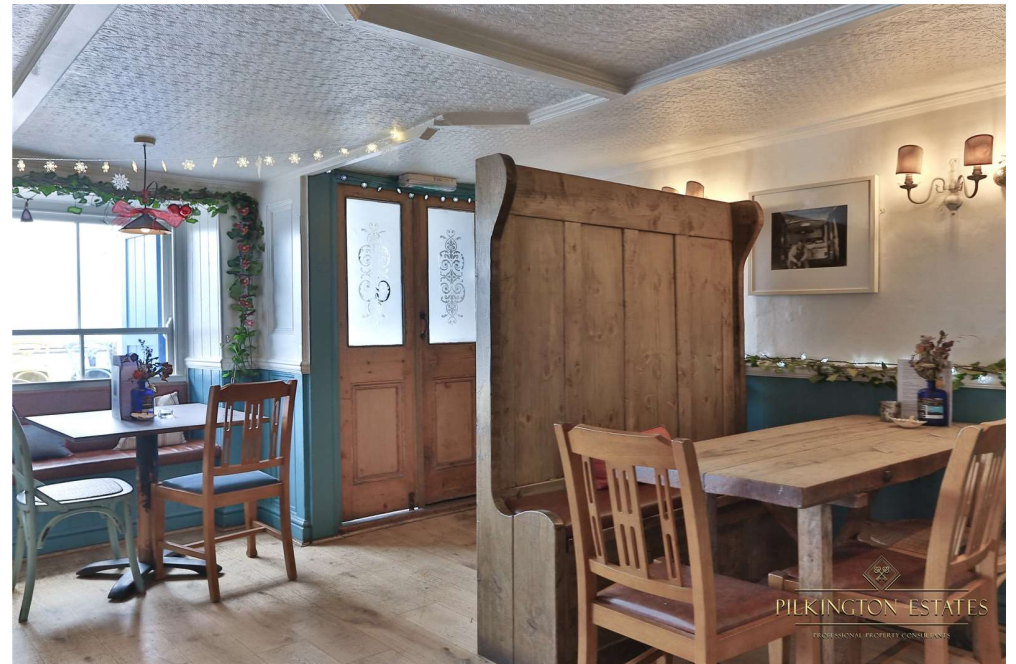
The Business - Under our vendors ownership of The Devonport Inn has established a strong reputation for excellent food and drink with the emphasis on sourcing locally, there over 500 highly rated reviews on Google (overall rating 4.6) and over 500 on Tripadvisor (overall rating 4).

Kingsand, Torpoint, PL10

Approximate Area = 2327 sq ft / 216.2 sq m
For identification only - Not to scale









Pilkington Estates - Plymouth

Third Floor
Unit 7
Sutton Harbour
Plymouth
Devon
PL4 0DN

T: 01752 729777

E: jon@pilkingtonestates.co.uk

www.pilkingtonestates.co.uk

Jet Software Ltd. Registered in England and Wales - 09408958
Registered Office: Third Floor 67-74 Saffron Hill, London, EC1N 8QX

Disclaimer

Every attempt has been made to ensure accuracy, however these property particulars are approximate and for illustrative purposes only. They have been prepared in good faith and they are not intended to constitute part of an offer of contract. We have not carried out a structural survey and the services, appliances and specific fittings have not been tested. All photographs, measurements, floor plans and distances referred to are given as a guide only and should not be relied upon for the purchase of any fixture or fittings. Lease details, service charges and ground rent (where applicable) are given as a guide only and should be checked prior to agreeing a sale.