



Butterleigh, Cullompton, Devon, EX15

Offers Over: £1,250,000

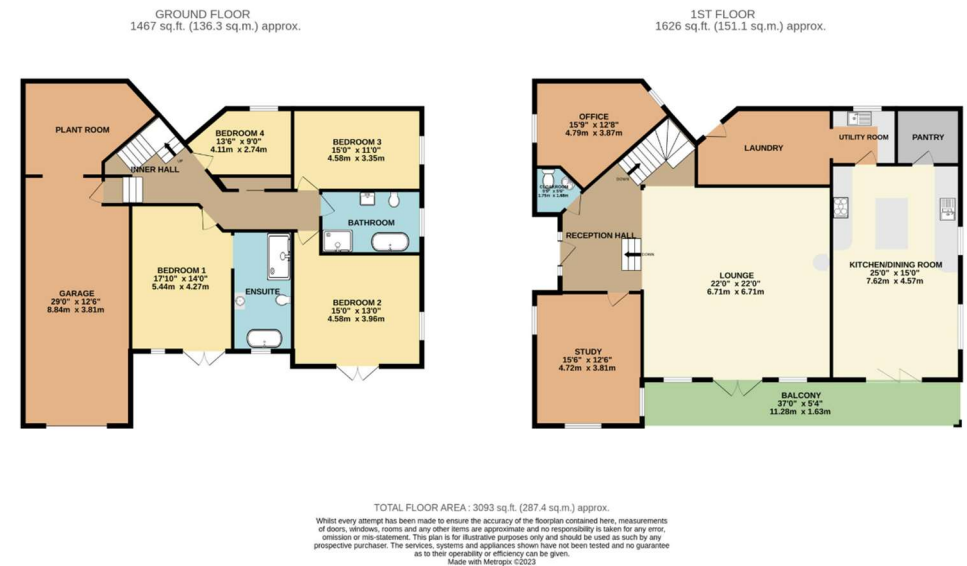
Butterleigh, Cullompton, Devon, EX15

Set on the hills overlooking the beautiful Exe valley, with some of Devon's finest views, is this spectacular five-bedroom detached home having only been completed in April 2023. The home exudes luxury with a High Specification throughout, as well as a huge focus on energy efficiency.

Upon entering the property, there is a free flow of open space, with a wonderful open living space, with a cozy woodburner and direct access to the balcony, gifting a splendid view over the rolling hills below. Adjacent to this, through a set of double doors is the chic, light and airy kitchen/diner, designed to the most modern of standards, with plenty of integrated appliances and further incredible views over Devon, and offers direct access to the laundry room. The entrance floor also offers a sizeable bedroom, which is currently optimised as a snug. This floor is complete with a sizeable study as well as a conveniently placed cloakroom.

Downstairs offers four double bedrooms, each one offering ample space, and the master bedroom hosts a splendid open plan four-piece suite, tastefully fitted. There is also a further family bathroom, which has been completed to a similar level of elegance.

outside, the home excites sitting on a plot of circa 2.47 acres and enjoys a dominant setting over the Devonshire countryside, with a mixture of formal lawn, as well as open grassland. The property benefits from a single integral garage as well as parking for multiple vehicles. EPC: A







Pilkington Estates - Plymouth

Third Floor
Unit 7
Sutton Harbour
Plymouth
Devon
PL4 0DN

T: 01752 729777

E: jon@pilkingtonestates.co.uk

www.pilkingtonestates.co.uk

Jet Software Ltd. Registered in England and Wales - 09408958
Registered Office: Third Floor 67-74 Saffron Hill, London, EC1N 8QX

Disclaimer

Every attempt has been made to ensure accuracy, however these property particulars are approximate and for illustrative purposes only. They have been prepared in good faith and they are not intended to constitute part of an offer of contract. We have not carried out a structural survey and the services, appliances and specific fittings have not been tested. All photographs, measurements, floor plans and distances referred to are given as a guide only and should not be relied upon for the purchase of any fixture or fittings. Lease details, service charges and ground rent (where applicable) are given as a guide only and should be checked prior to agreeing a sale.