



Pentillie Road, Bere Alston, Devon, PL20

Offers Over: £300,000

This gorgeous detached two double bedroom bungalow is situated in the peaceful and prestigious area of Bere Alston. With two double bedrooms, a modern fitted bathroom, a spacious kitchen, and a beautiful conservatory alongside a large lounge diner, the bungalow would undoubtedly suit either a buyer requiring single level living with further perfectly level access, or alternatively a younger buyer seeking a home to add potential as the home has got potential to extend.

Outside, a spacious wrap around garden allowing ample space for outdoor furniture creates a lovely outdoor entertaining space. This home also comes with a single garage and driveway for multiple vehicles. EPC: E

Rooms

Porch 7'10" x 5'9" (2.4m x 1.75m). tiled flooring, uPvc double glazed windows, uPvc double glazed door to enter

hallway uPvc double glazed window to the front, radiator, good sized storage cupboard, access to loft via ladder, loft boarded

Kitchen Diner 7'6" x 16'10" (2.29m x 5.13m). laminate flooring, heated towel rail, integrated fridge freezer, integrated oven and grill, five ring gas hob, extractor fan, composite sink and a half with drainer, mixer tap, uPvc double glazed window to the front, integrated washing machine and tumble dryer, little extension with uPvc double glazed window and door leading out to rear garden

Bedroom One 12'2" x 10'3" (3.7m x 3.12m). carpeted flooring, radiator, uPvc double glazed window to the front, built in wardrobe space

Lounge Diner 22'9" x 12'11" (6.93m x 3.94m). carpeted flooring, uPvc double glazed window and double doors to the rear, gas fire place, radiator

Conservatory 20'6" x 8'3" (6.25m x 2.51m). tiled flooring, radiator, uPvc double glazed windows, uPvc double glazed doors to enter rear garden

Garden wrap around plot. part patio part lawn/vegetation, room to extend, private

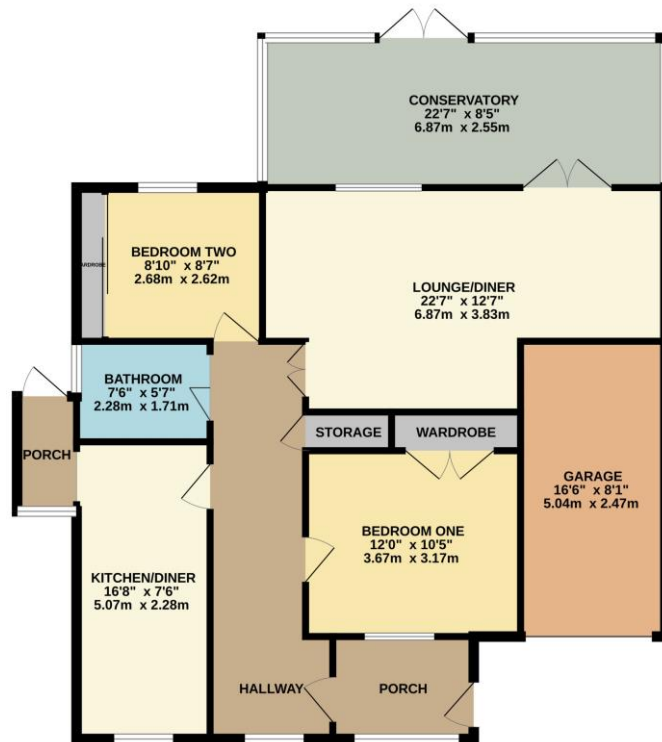
Garage single garage with electric, houses boiler

Parking driveway at the front to allow off street parking





GROUND FLOOR
1165 sq.ft. (108.3 sq.m.) approx.



TOTAL FLOOR AREA : 1165 sq.ft. (108.3 sq.m.) approx.

Whilst every attempt has been made to ensure the accuracy of the floorplan contained here, measurements of floors, windows, rooms and any other items are approximate and no responsibility is taken for any error, omission or mis-statement. This plan is for illustrative purposes only and should be used as such by any prospective purchaser. The services, systems and appliances shown have not been tested and no guarantee as to their operability or efficiency can be given.
Made with Metagame 12/2022



Pilkington Estates - Plymouth
Third Floor, Unit 7, Sutton Harbour, Plymouth
Devon, PL4 0DN

T: 01752 729777
E: jon@pilkingtonestates.co.uk
www.pilkingtonestates.co.uk

Jet Software Ltd. Registered in England and Wales - 09408958
Registered Office: Third Floor 67-74 Saffron Hill, London, EC1N 8QX

Disclaimer

Every attempt has been made to ensure accuracy, however these property particulars are approximate and for illustrative purposes only. They have been prepared in good faith and they are not intended to constitute part of an offer of contract. We have not carried out a structural survey and the services, appliances and specific fittings have not been tested. All photographs, measurements, floor plans and distances referred to are given as a guide only and should not be relied upon for the purchase of any fixture or fittings. Lease details, service charges and ground rent (where applicable) are given as a guide only and should be checked prior to agreeing a sale.