

St. Georges Terrace, Plymouth, Devon, PL2

Offers Over: £240,000

We are excited to introduce to the market this beautifully expansive period property in the sought after location of Stoke. This property offers well designed accommodation with a blend of contemporary and original features, allowing space for a growing family. The home comprises of a tastefully decorated living room with a working fire for the cosy winter evenings which flows into a sizable dining room.

You then have a fantastic sized kitchen breakfast room, with gorgeous wooden floorboards with a twist of contemporary this space is ideal for entertaining. The ground floor also benefits from a downstairs bathroom with a WC and a walk in shower. The first floor boasts three double bedrooms, with period features throughout and a lot of built in storage, alongside another shower room. The loft space offers even more storage with it being near enough fully boarded, with the option to convert if needing the extra bedroom. The rear garden is low maintenance with the option of off street parking alongside a space to enjoy the outside, so this wonderful home really does tick a lot of boxes. EPC:D

Rooms

Porch uPvc double glazed door to enter, wooden flooring

Hallway Wooden flooring, stairs leading to the first floor, storage under the stairs

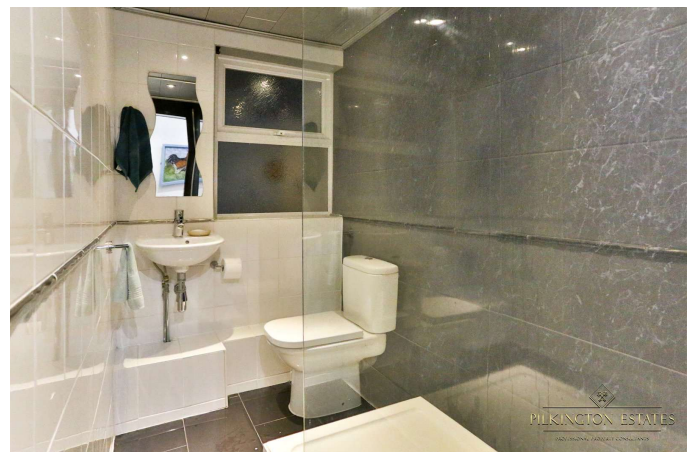
Lounge / Dining Room Wooden flooring, uPvc double glazed bay window to the front, working coal fire, radiator, open arch into the dining room, wooden flooring, feature fire place, uPvc double glazed window to the rear, radiator

Kitchen Painted wood flooring, space for fridge freezer, space for dish washer, space for washing machine, space for tumble dryer, uPvc double glazed window to the side, integrated oven and grill, stainless steel sink and drainer with hot and cold mixer tap uPvc double glazed frosted window to the side, induction hob with hooded extractor fan, tiled splash back, original features

Little Hallway Tiled flooring, radiator, uPvc double glazed door leading out to the garden

Landing Carpeted stairs and landing, access to the loft which is has a ladder and is mostly boarded and is head height

Bedroom One Wooden flooring, radiator,





uPvc double glazed bay windows to the front

street parking, little roof terrace which have space for table and chairs

Bedroom Two Wooden flooring, radiator, uPvc double glazed window to the rear, built in storage

Bedroom three Wooden flooring, radiator, uPvc double glazed window to the rear, built in storage

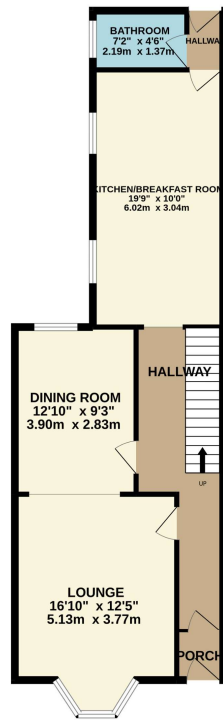
Family Bathroom One Tiled flooring, walk in shower, toilet, tiled walls, sink with hot and cold mixer tap, uPvc double glazed frosted window

Bathroom Two Tiled flooring, toilet, uPvc double glazed frosted window, shower cubicle, sink with hot and cold mixer tap

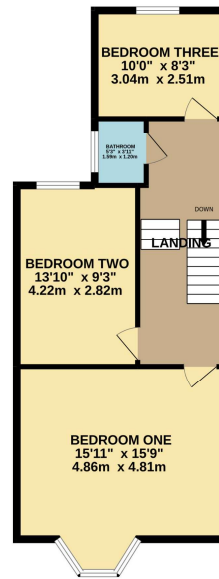
Garden Patio leading alongside the back of the house, stairs leading to the top tier, double gates from the back alley to allow off



GROUND FLOOR
684 sq.ft. (63.5 sq.m.) approx.

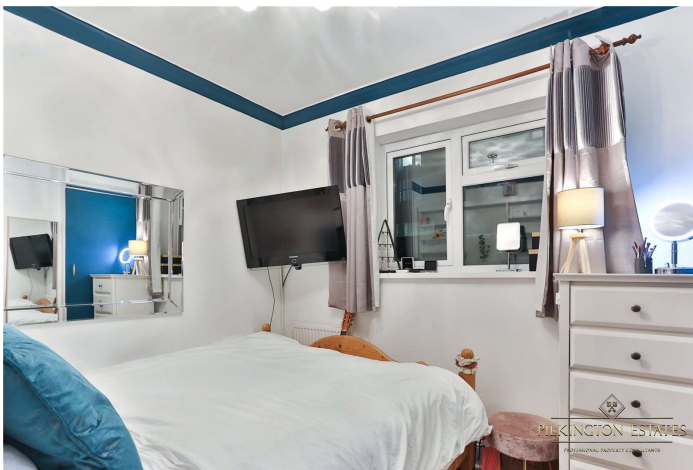


1ST FLOOR
576 sq.ft. (53.5 sq.m.) approx.



TOTAL FLOOR AREA : 1260 sq.ft. (117.1 sq.m.) approx.

Whilst every attempt has been made to ensure the accuracy of the floorplan contained here, measurements of doors, windows, rooms and any other items are approximate and no responsibility is taken for any error, omission or mis-statement. This plan is for illustrative purposes only and should be used as such by any prospective purchaser. The services, systems and appliances shown have not been tested and no guarantee as to their operability or efficiency can be given.
Made with Metropack C3022



Jet Software Ltd. Registered in England and Wales - 09408958
Registered Office: Third Floor 67-74 Saffron Hill, London, EC1N 8QX

Disclaimer

Every attempt has been made to ensure accuracy, however these property particulars are approximate and for illustrative purposes only. They have been prepared in good faith and they are not intended to constitute part of an offer of contract. We have not carried out a structural survey and the services, appliances and specific fittings have not been tested. All photographs, measurements, floor plans and distances referred to are given as a guide only and should not be relied upon for the purchase of any fixture or fittings. Lease details, service charges and ground rent (where applicable) are given as a guide only and should be checked prior to agreeing a sale.