



## Corporation Road, Plymouth, PL2

**Offers Over: £190,000**

This beautiful three bedroom home is conveniently located a short distance away from renowned schools as well as useful local amenities. The spacious residence offers a substantial living room which allows natural light to flow effortlessly in through its large window and makes a useful space for visitors.

The ground floor then offers a open plan kitchen diner with a lot of storage space. The home also has the added bonus of a utility space with a downstairs WC. The first floor offers three bedrooms, great for a family and is decorated just as tastefully as the rest of the house. This property would be a great purchase for a first time buyer or a young family. The residence is complete with its very own private garden, not over looked at all and offers a patio area for entertaining guests. EPC: TBC



## Rooms

**Porch** Tiled flooring, uPvc double glazed door to enter

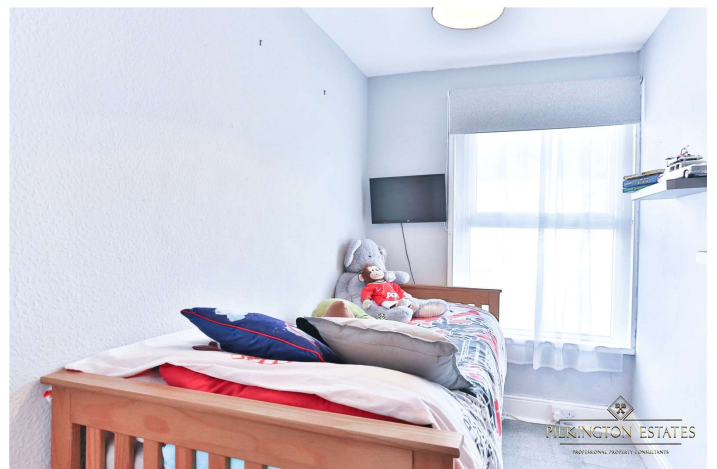
**Hallway** Carpeted flooring, radiator, carpeted stairs leading to the first floor

**Living Room** Carpeted flooring, radiator, uPvc double glazed window to the front, fire in the lounge is a gas burner

**Kitchen Dining Room** Laminate flooring, radiator, integrated oven and four ring gas hob, extractor fan, tiled splash back, uPvc double glazed window to the rear, stainless steel sink and drainer with hot and cold mixer tap, plenty of unit space, storage space under the stairs



**Landing** Carpeted landing, uPvc double glazed window to the rear, access to the loft, built in storage

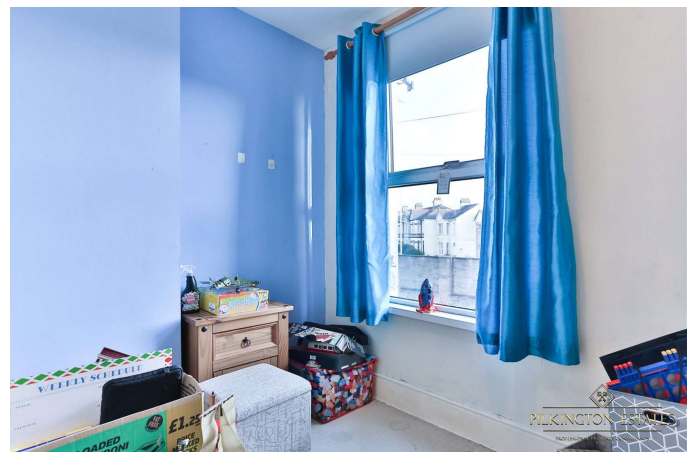


**Bedroom One** Carpeted flooring, radiator, uPvc double glazed window to the front

**Bedroom Two** Carpeted flooring, radiator, uPvc double glazed window to the front, built in storage

**Bedroom Three** Carpeted flooring, radiator, uPvc double glazed window to the rear

**Bathroom** Vinyl flooring, sink with hot and cold mixer tap, toilet, heated towel rail, tiled walls, bath tub with shower over head with hot







and cold mixer tap, extractor fan

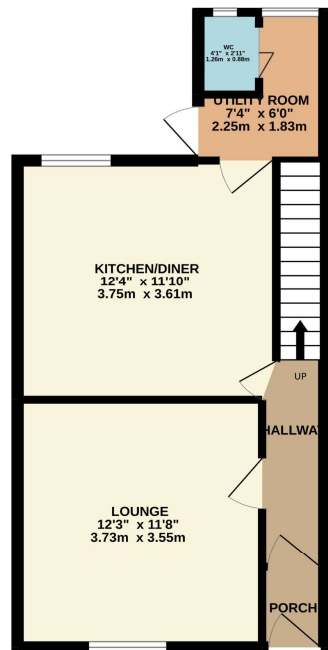
**Utility Room** Vinyl flooring, space and plumbing for washing machine, space and plumbing for dish washer, space and plumbing for tumble drying, uPvc double glazed frosted window to the rear, sink with hot and cold tap

**Seperate toilet** Vinyl flooring, toilet, uPvc double glazed frosted window to the rear, boiler

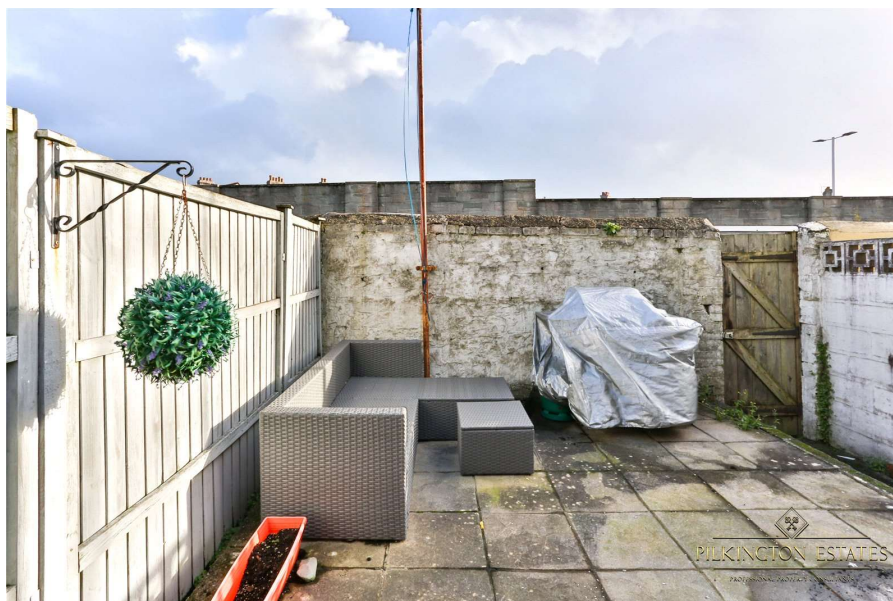
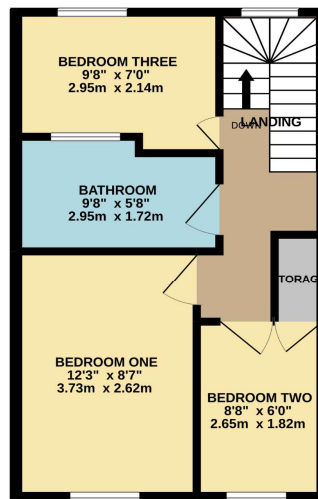
**Garden** Low maintained garden, patio, access to the back lane by a gate



GROUND FLOOR  
395 sq.ft. (36.7 sq.m.) approx.



1ST FLOOR  
351 sq.ft. (32.6 sq.m.) approx.



**Pilkington Estates - Plymouth**  
Third Floor, Unit 7, Sutton Harbour, Plymouth  
Devon, PL4 0DN

T: 01752 729777  
E: [jon@pilkingtonestates.co.uk](mailto:jon@pilkingtonestates.co.uk)  
[www.pilkingtonestates.co.uk](http://www.pilkingtonestates.co.uk)

Jet Software Ltd. Registered in England and Wales - 09408958  
Registered Office: Third Floor 67-74 Saffron Hill, London, EC1N 8QX

#### Disclaimer

Every attempt has been made to ensure accuracy, however these property particulars are approximate and for illustrative purposes only. They have been prepared in good faith and they are not intended to constitute part of an offer of contract. We have not carried out a structural survey and the services, appliances and specific fittings have not been tested. All photographs, measurements, floor plans and distances referred to are given as a guide only and should not be relied upon for the purchase of any fixture or fittings. Lease details, service charges and ground rent (where applicable) are given as a guide only and should be checked prior to agreeing a sale.