



## **Donnington Drive, Plymouth, Devon, PL3**

### **Offers Over: £250,000**

We are excited to introduce this stunning three-bedroom semi-detached family home nestled within the quiet residential neighbourhood of Higher Compton. The home offers a wealth of light and airy rooms with high specification finishes and contemporary decor. The ground floor consists of a spacious living room, an open plan kitchen diner which is the hub of the home providing a great space to host and also a utility space.

Upstairs the home has three well-proportioned bedrooms and a newly fitted family bathroom. Outside, the rear garden has an abundance of space, a great place to entertain guests with decking, patio, lawn and your very own summer bar. To complete this fantastic home there is a single garage and a driveway allowing off street parking. EPC: C

## Rooms

**Entrance Hall** 5'11" x 4'3" (1.8m x 1.3m). composite door, laminate flooring, radiator, stairs leading to the first floor

**Lounge** 12'1" x 12'4" (3.68m x 3.76m). laminate flooring, radiator, uPvc double glazed window to the front aspect

**Kitchen/Diner** 10'2" x 15'2" (3.1m x 4.62m). tiled flooring, radiator, integrated oven, integrated microwave, induction hob, extractor fan, integrated dishwasher, two uPvc double glazed windows to the rear, sink with hot and cold mixer tap

**Utility Room** 9'2" x 3'3" (2.8m x 1m). space and plumbing for washing machine, multiple plug sockets, cupboard space, uPvc double glazed door leading out to the garden

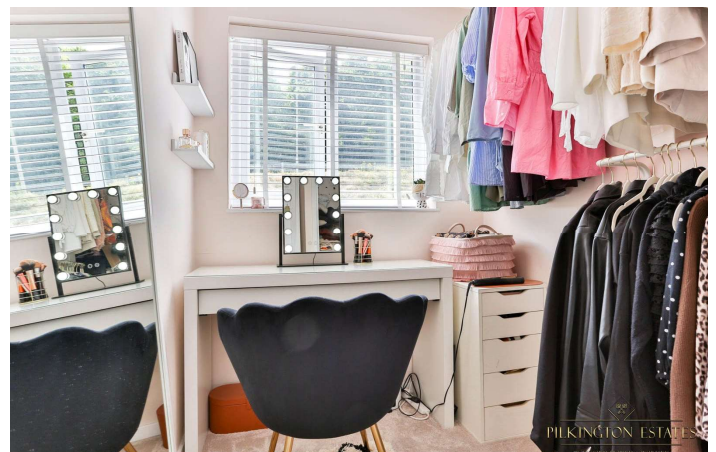
**Garage** 8' x 15'9" (2.44m x 4.8m). side and front entrance to the garage, uPvc double glazed window

**Landing** 5'7" x 6'11" (1.7m x 2.1m). carpeted flooring, access to the loft via a ladder, uPvc double glazed window to the side aspect

**Bedroom Three** 5'7" x 8'7" (1.7m x 2.62m). carpeted flooring, radiator, uPvc double glazed window to the front aspect

**Bedroom One** 9'4" x 11'11" (2.84m x 3.63m). carpeted flooring, radiator, uPvc double glazed window to the front

**Bedroom Two** 10'9" x 9'4" (3.28m x 2.84m). carpeted flooring, radiator, uPvc double glazed





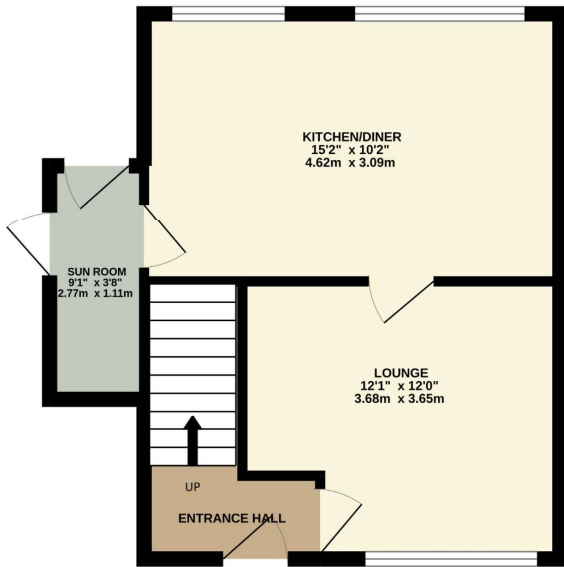
window to the rear aspect, built in storage cupboard

**Bathroom** 5'5" x 6'2" (1.65m x 1.88m). tiled flooring, tiled walls, heated towel rail, bath tub, shower head, uPvc double glazed frosted window to the side, sink with hot and cold mixer tap, toilet

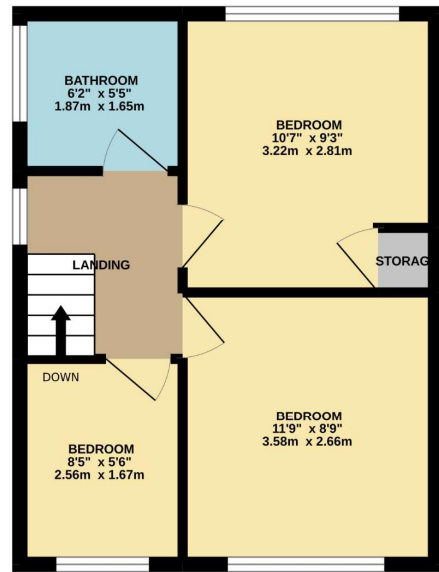
**Garden** part decking, part lawn, part patio, summer bar



GROUND FLOOR



1ST FLOOR



Whilst every attempt has been made to ensure the accuracy of the floorplan contained here, measurements of doors, windows, rooms and any other items are approximate and no responsibility is taken for any error, omission or mis-statement. This plan is for illustrative purposes only and should be used as such by any prospective purchaser. The services, systems and appliances shown have not been tested and no guarantee as to their operability or efficiency can be given.  
Made with Metropix ©2022



**Pilkington Estates - Plymouth**  
Third Floor, Unit 7, Sutton Harbour, Plymouth  
Devon, PL4 0DN

T: 01752 729777  
E: [jon@pilkingtonestates.co.uk](mailto:jon@pilkingtonestates.co.uk)  
[www.pilkingtonestates.co.uk](http://www.pilkingtonestates.co.uk)

Jet Software Ltd. Registered in England and Wales - 09408958  
Registered Office: Third Floor 67-74 Saffron Hill, London, EC1N 8QX

#### Disclaimer

Every attempt has been made to ensure accuracy, however these property particulars are approximate and for illustrative purposes only. They have been prepared in good faith and they are not intended to constitute part of an offer of contract. We have not carried out a structural survey and the services, appliances and specific fittings have not been tested. All photographs, measurements, floor plans and distances referred to are given as a guide only and should not be relied upon for the purchase of any fixture or fittings. Lease details, service charges and ground rent (where applicable) are given as a guide only and should be checked prior to agreeing a sale.