

Norton Avenue, Plymouth, Devon, PL4 Offers Over: £220,000

Set in the increasingly popular area of Lipson is this gorgeous three bedroom 1930's family home. The property has undergone extensive work with the likes of complete re-plastering, new windows and doors, so the home would benefit many buyers who are looking for a property ready to move straight into but also to add your own touch.

From the moment you enter you are greeted by tasteful finishes and a considerably large dining kitchen area which has recently been fitted. The lounge homes a cosy atmosphere which exudes natural light through the bay window, complete with a feature fireplace and modern touches. The property is complete with three bedrooms, two generous doubles and a third ideal for a single bedroom or a home office. To complete upstairs you have a newly fitted shower room. The garden you have a part vegetation, part concrete which creates a paradise to enjoy those summer days. EPC:TBC

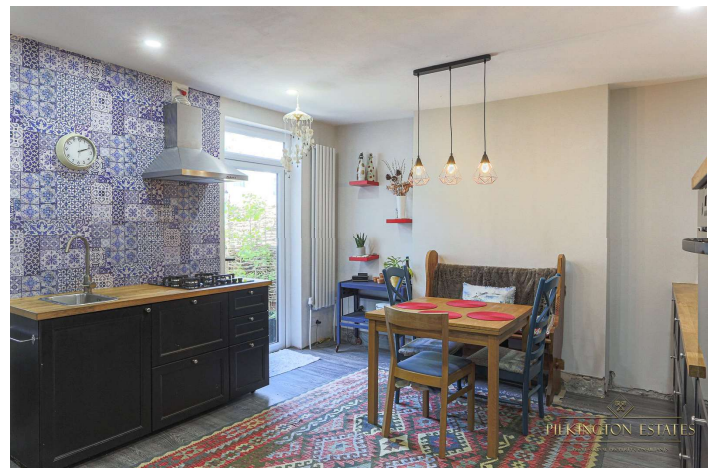


Rooms

Porch 2'11" x 3'7" (0.9m x 1.1m). uPvc double glazed wooden door, laminate flooring

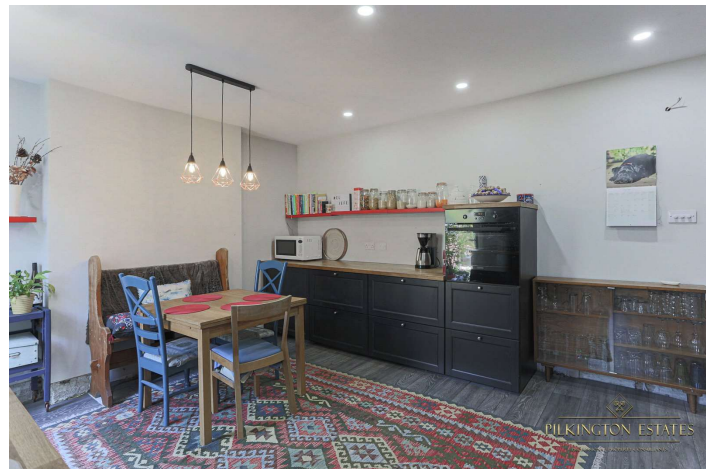
Hallway 12'6" x 3'1" (3.8m x 0.94m). laminate flooring

Lounge 15'6" x 13'1" (4.72m x 4m). wooden flooring, bay window to the front with uPvc double glazed windows, radiator



Kitchen/Diner 16'11" x 13' (5.16m x 3.96m). laminate flooring, stairs leading to the first floor, storage space underneath the stairs, wall mounted radiator, stainless steel sink with hot and cold mixer tap, tiled splashback, four ring gas hob, hooded extractor fan, uPvc double glazed door leading out to the garden, cupboard units

Utility Room 5'9" x 8'2" (1.75m x 2.5m). uPvc double glazed frosted door to the side, uPvc double glazed window to the rear, tiled splashback, stainless steel sink with drainer, hot and cold mixer tap, boiler



Landing 5'10" x 16'10" (1.78m x 5.13m). carpeted flooring, access to the loft via pull down ladder

Bedroom One 15'5" x 10'4" (4.7m x 3.15m). carpeted flooring, radiator, bay window to the front, uPvc double glazed windows





Bedroom Two 13' x 10'6" (3.96m x 3.2m). carpeted flooring, radiator, uPvc double glazed window to the rear

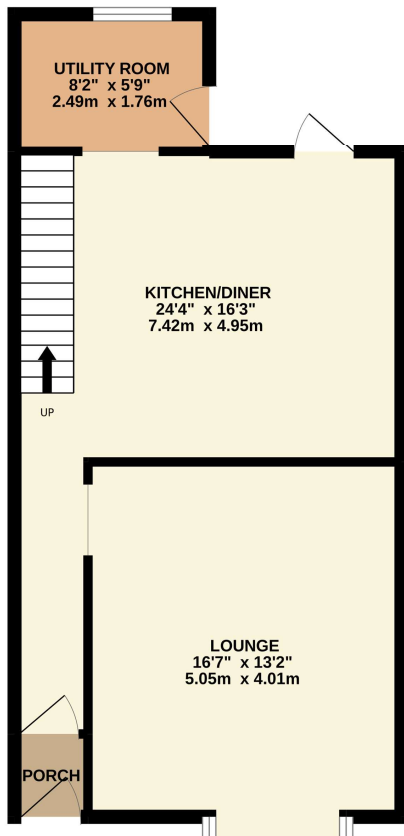
Bedroom Three 5'11" x 9'3" (1.8m x 2.82m). vinyl flooring, uPvc double glazed window to the front aspect, radiator

Bathroom 5'7" x 8'2" (1.7m x 2.5m). vinyl flooring, sink with hot and cold mixer tap, storage underneath, toilet, uPvc double glazed frosted window to the rear, shower cubicle

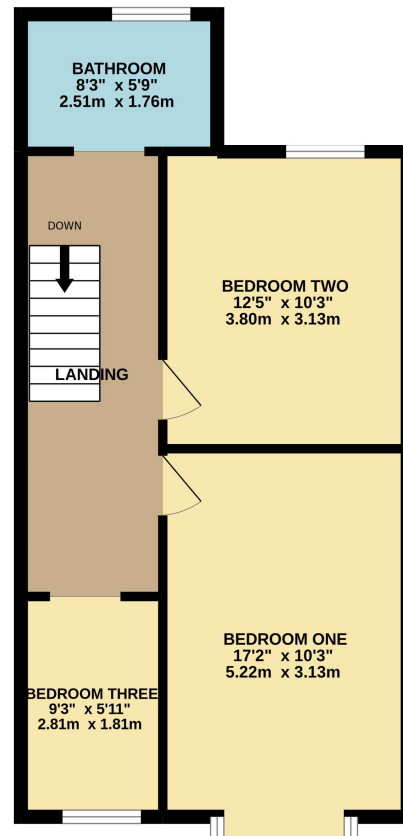
Garden rear courtyard, part patio part vegetation



GROUND FLOOR
509 sq.ft. (47.3 sq.m.) approx.



1ST FLOOR
509 sq.ft. (47.3 sq.m.) approx.



Pilkington Estates - Plymouth
Third Floor, Unit 7, Sutton Harbour, Plymouth
Devon, PL4 0DN

T: 01752 729777
E: jon@pilkingtonestates.co.uk
www.pilkingtonestates.co.uk

Jet Software Ltd. Registered in England and Wales - 09408958
Registered Office: Third Floor 67-74 Saffron Hill, London, EC1N 8QX

Disclaimer

Every attempt has been made to ensure accuracy, however these property particulars are approximate and for illustrative purposes only. They have been prepared in good faith and they are not intended to constitute part of an offer of contract. We have not carried out a structural survey and the services, appliances and specific fittings have not been tested. All photographs, measurements, floor plans and distances referred to are given as a guide only and should not be relied upon for the purchase of any fixture or fittings. Lease details, service charges and ground rent (where applicable) are given as a guide only and should be checked prior to agreeing a sale.