



Dale Gardens, Plymouth, Devon, PL4

Offers Over: £230,000

Freehold

This gorgeous 1930s terraced home near Central Park is a great example of how a home filled with character and original features can be modernised and combined with contemporary open-plan style living

Rooms

Entrance Hall Carpeted flooring, stairs leading to second floor, radiator, storage under stairs

Kitchen Dining Room Laminate flooring, space for fridge freezer, oven with hob with an extractor fan, ceramic sink and a half with drainer which a hot and cold mixer tap, uPvc double glazed window to the side, uPvc double glazed window to the rear, stable door leading to the garden

Play Room Laminate flooring, storage on either side, carpeted stairs leading to the first floor, radiator

Landing uPvc double glazed window to the rear

Porch Tiled flooring, wooden door to enter the property

Living Room Exposed wooden floor boards, uPvc double glazed bay windows, feature fire place

Dining Room Two Exposed wooden floor boards, uPvc double glazed window to the rear, radiator

Utility Room Laminate flooring, uPvc double glazed door to access the outside with a window, space for washing machine

Downstairs WC uPvc double glazed frosted window to the side, toilet, little sink with hot and cold mixer taps

Second Landing Loft access, Carpeted landing

Bedroom Three Carpeted flooring, radiator, uPvc double glazed window to the front

Bedroom One Exposed wooden floor boards, uPvc double glazed bay windows to the front,





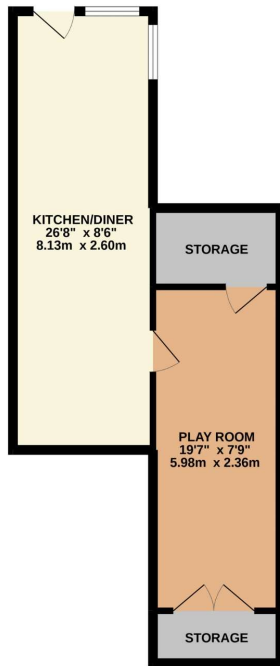
radiator

Bedroom Two Exposed wooden floor boards, radiator, uPvc double glazed window to the rear

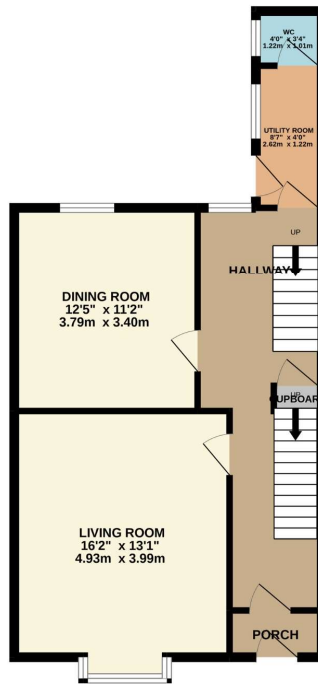
Bathroom Laminate flooring, shower cubicle, toilet, two uPvc double glazed frosted windows to the rear, sink with hot and cold tap, bath tub, partly tiled walls

Garden low maintenance, part patio part decking with a roller door if you wanted to use it for parking

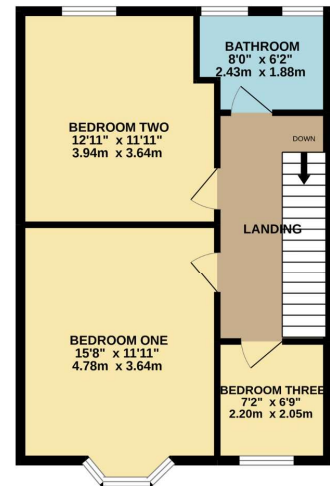
BASEMENT
442 sq.ft. (41.0 sq.m.) approx.



GROUND FLOOR
565 sq.ft. (52.5 sq.m.) approx.



1ST FLOOR
516 sq.ft. (47.9 sq.m.) approx.



TOTAL FLOOR AREA : 1522 sq.ft. (141.4 sq.m.) approx.

Whilst every attempt has been made to ensure the accuracy of the floorplan contained here, measurements of doors, windows, rooms and any other items are approximate and no responsibility is taken for any error, omission or mis-statement. This plan is for illustrative purposes only and should be used as such by any prospective purchaser. The services, systems and appliances shown have not been tested and no guarantee as to their operability or efficiency can be given.
Made with Metropix ©2022

Directions

Pilkington Estates - Plymouth

Third Floor, Unit 7, Sutton Harbour, Plymouth
Devon, PL4 0DN

T: 01752 729777

E: jon@pilkingtonestates.co.uk

www.pilkingtonestates.co.uk

Jet Software Ltd. Registered in England and Wales - 09408958
Registered Office: Third Floor 67-74 Saffron Hill, London, EC1N 8QX

Disclaimer

Every attempt has been made to ensure accuracy, however these property particulars are approximate and for illustrative purposes only. They have been prepared in good faith and they are not intended to constitute part of an offer of contract. We have not carried out a structural survey and the services, appliances and specific fittings have not been tested. All photographs, measurements, floor plans and distances referred to are given as a guide only and should not be relied upon for the purchase of any fixture or fittings. Lease details, service charges and ground rent (where applicable) are given as a guide only and should be checked prior to agreeing a sale.