

## Millbay Road, Plymouth, PL1 Offers Over: £125,000

*Leasehold*

Situated in a popular development just minutes away from the Hoe lies this large and airy retirement apartment. The complex is exclusively available to those over the age of 55, however family or visitors are welcome and there is residents and visitor parking. The home offers substantial accommodation that has been suitably modernised including a bright and spacious living room that spans the length of the apartment.

The apartment has a generous double bedroom which due to its large windows with a south facing aspect has no shortage of light flowing through. Furthermore, there is a generous bathroom which at present houses a large shower cubicle. The real feature of this home is the location, allowing elderly residents to access help and assistance when needed, but retain independence in their own home, and with convenient access to local amenities and community clubs it truly ticks all the boxes. EPC: TBC.

## Rooms

**Entrance Hall** Carpet flooring, access to bathroom, bedroom and living room, storage cupboards.

**Living Room** Carpet flooring, wall mounted electric radiator, Tv point, double glazed window to rear aspect and patio door leading to balcony.

**Kitchen** Laminate flooring, matching wall & base units, integrated hob with extractor fan above, integrated double oven, sink & draining unit, double glazed window to side aspect.

**Bedroom** Carpet flooring, wall mounted electric radiator, double glazed window to rear aspect.

**Bathroom** Vinyl flooring, low level Wc, ceramic wash hand basin with hot & cold mixer taps, shower cubicle with shower, vanity unit, double glazed window to side aspect.

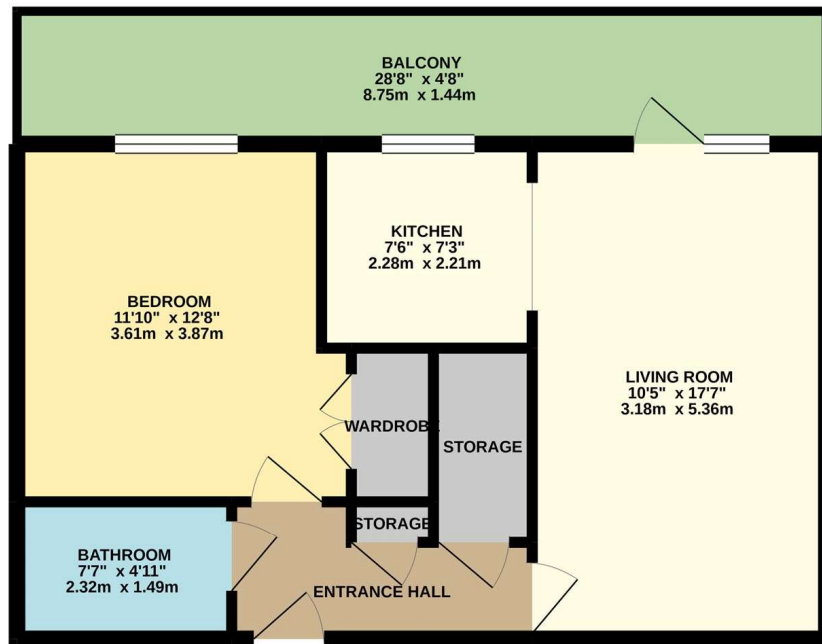




PILKINGTON ESTATE

PROFESSIONAL PROPERTY CONSULTANTS

ONE BEDROOM APARTMENT  
504 sq.ft. (46.8 sq.m.) approx.



TOTAL FLOOR AREA: 504 sq.ft. (46.8 sq.m.) approx.  
Whilst every attempt has been made to ensure the accuracy of the floorplan contained herein, measurements of doors, windows, rooms and any other items are approximate and no responsibility is taken for any error, omission or mis-statement. This plan is for illustrative purposes only and should be used as such by any prospective purchaser. The services, systems and appliances shown have not been tested and no guarantee as to their operability or efficiency can be given.  
Made with Metropo 1/2021.

## Directions

### Pilkington Estates - Plymouth

Third Floor, Unit 7, Sutton Harbour, Plymouth  
Devon, PL4 0DN

T: 01752 729777

E: [jon@pilkingtonestates.co.uk](mailto:jon@pilkingtonestates.co.uk)

[www.pilkingtonestates.co.uk](http://www.pilkingtonestates.co.uk)

Jet Software Ltd. Registered in England and Wales - 09408958  
Registered Office: Third Floor 67-74 Saffron Hill, London, EC1N 8QX

#### Disclaimer

Every attempt has been made to ensure accuracy, however these property particulars are approximate and for illustrative purposes only. They have been prepared in good faith and they are not intended to constitute part of an offer of contract. We have not carried out a structural survey and the services, appliances and specific fittings have not been tested. All photographs, measurements, floor plans and distances referred to are given as a guide only and should not be relied upon for the purchase of any fixture or fittings. Lease details, service charges and ground rent (where applicable) are given as a guide only and should be checked prior to agreeing a sale.