



Chapel Street, Devonport, Plymouth, PL1 Offers Over: £110,000

Leasehold

This impressive one double bedroom apartment is located on the second floor of an attractively presented building situated close to schools, shops and accessible transport links. The apartment is incredibly low maintenance and is therefore well suited to first time buyers, a young professional or even a mature buyer looking to be close to the city

Although a one bedroom apartment, the home is particularly spacious as a result of its vibrant and airy free-flowing open plan kitchen living area which offers an abundance of natural light. This home comes complete with an allocated parking space and can be accessed with ease as a result of its internal lift. EPC: C

Rooms

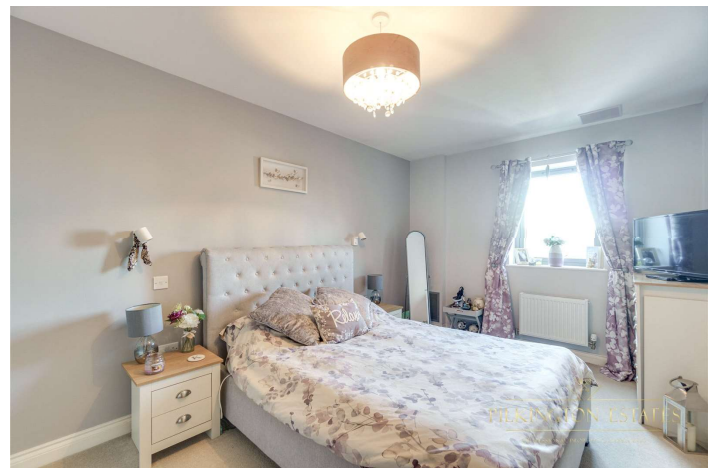
Entrance Hall 8'4" x 6' (2.54m x 1.83m). carpeted flooring, radiator, storage cupboard which is currently used as a utility space

Living Room/Kitchen 10'5" x 17' (3.18m x 5.18m). part carpeted flooring, part laminated flooring, radiator, two uPvc double glazed windows, integrated fridge freezer, integrated oven, integrated dishwasher, induction hob, plenty of cupboard space, stainless steel sink with drainer and mixer tap

Bedroom 9'3" x 17' (2.82m x 5.18m). carpeted flooring, radiator, uPvc double glazed window, multiple plug sockets

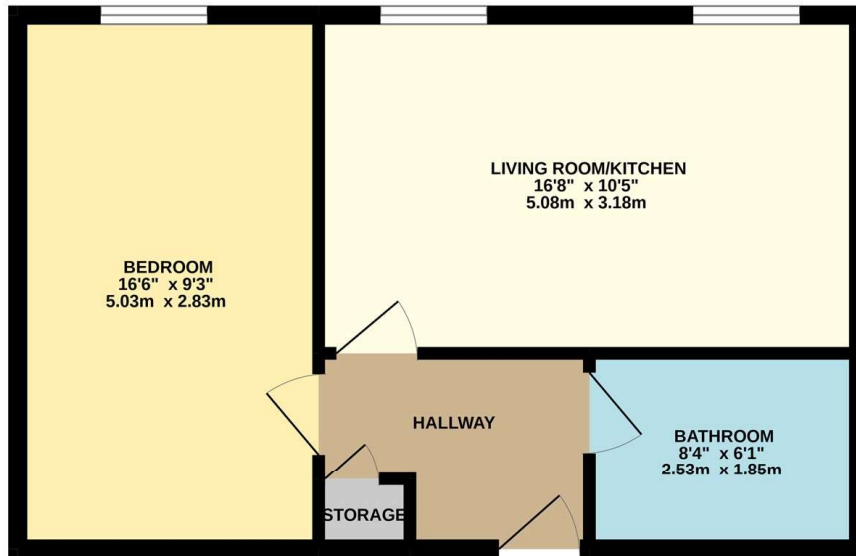
Bathroom 8'3" x 6'1" (2.51m x 1.85m). tiled flooring, partly tiled walls, heated towel rail, toilet, sink with mixer tap, vanity mirror, bath tub, shower

Parking one allocated parking space with the apartment, with visitor spaces available also





GROUND FLOOR
428 sq.ft. (39.8 sq.m.) approx.



TOTAL FLOOR AREA: 428 sq.ft. (39.8 sq.m.) approx.
Whilst every attempt has been made to ensure the accuracy of the floorplan contained here, measurements of doors, windows, rooms and any other items are approximate and no responsibility is taken for any error, omission or mis-statement. This plan is for illustrative purposes only and should be used as such by any prospective purchaser. The services, systems and appliances shown have not been tested and no guarantee as to their operability or efficiency can be given.
Made with Metropix 42022

Pilkington Estates - Plymouth

Third Floor, Unit 7, Sutton Harbour, Plymouth
Devon, PL4 0DN

T: 01752 729777

E: jon@pilkingtonestates.co.uk

www.pilkingtonestates.co.uk

Jet Software Ltd. Registered in England and Wales - 09408958
Registered Office: Third Floor 67-74 Saffron Hill, London, EC1N 8QX

Disclaimer

Every attempt has been made to ensure accuracy, however these property particulars are approximate and for illustrative purposes only. They have been prepared in good faith and they are not intended to constitute part of an offer of contract. We have not carried out a structural survey and the services, appliances and specific fittings have not been tested. All photographs, measurements, floor plans and distances referred to are given as a guide only and should not be relied upon for the purchase of any fixture or fittings. Lease details, service charges and ground rent (where applicable) are given as a guide only and should be checked prior to agreeing a sale.