

PILKINGTON ESTATES

**Donierts Close, Liskeard, PL14**

**Offers Over: £260,000**

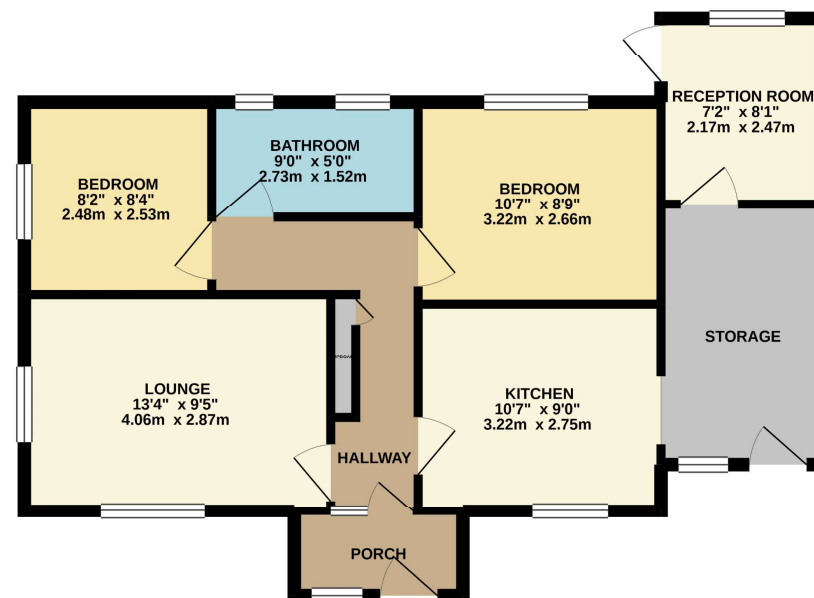
*Freehold*



# Donierts Close, Liskeard, PL14

This two bedroom bungalow set in a peaceful cul-de-sac provides both tranquil surroundings but also excellent transport links across Cornwall and into Plymouth and is located within walking distance to Liskeard town centre. The home has so much to offer and it's spacious, bright and welcoming layout has been cleverly configured to suit buyers of all backgrounds but also allow single level living. The bungalow has a light and airy living room overlooking the luscious front garden, and provides space for both guests and entertaining and is complimented perfectly by a modern kitchen. The entire property has been decorated tastefully but also neutrally, allowing a buyer to come in and make it their own. There are a further two double bedrooms which are as equally as spacious as the reception areas, and the master has a delightful outlook over the expansive rear garden. Finished perfectly with a fresh bathroom, this home offers space and potential for any buyer. Externally, the property benefits from a driveway for multiple cars to the front, and a large and sunny garden to the rear with a wealth of potential for those who love gardening. EPC: TBC

GROUND FLOOR  
656 sq.ft. (60.9 sq.m.) approx.



2 BEDROOM BUNGALOW  
TOTAL FLOOR AREA: 656 sq.ft. (60.9 sq.m.) approx.  
Whilst every attempt has been made to ensure the accuracy of the floorplan contained here, measurements of doors, windows, rooms and any other items are approximate and no responsibility is taken for any error, omission or mis-statement. This plan is for illustrative purposes only and should be used as such by any prospective purchaser. The services, systems and appliances shown have not been tested and no guarantee is given as to their operability or efficiency can be given.  
Made with Metropix ©2021





## Pilkington Estates - Plymouth

Third Floor  
Unit 7  
Sutton Harbour  
Plymouth  
Devon  
PL4 0DN

T: 01752 729777

E: [jon@pilkingtonestates.co.uk](mailto:jon@pilkingtonestates.co.uk)

[www.pilkingtonestates.co.uk](http://www.pilkingtonestates.co.uk)

Jet Software Ltd. Registered in England and Wales - 09408958  
Registered Office: Third Floor 67-74 Saffron Hill, London, EC1N 8QX

### Disclaimer

Every attempt has been made to ensure accuracy, however these property particulars are approximate and for illustrative purposes only. They have been prepared in good faith and they are not intended to constitute part of an offer of contract. We have not carried out a structural survey and the services, appliances and specific fittings have not been tested. All photographs, measurements, floor plans and distances referred to are given as a guide only and should not be relied upon for the purchase of any fixture or fittings. Lease details, service charges and ground rent (where applicable) are given as a guide only and should be checked prior to agreeing a sale.