



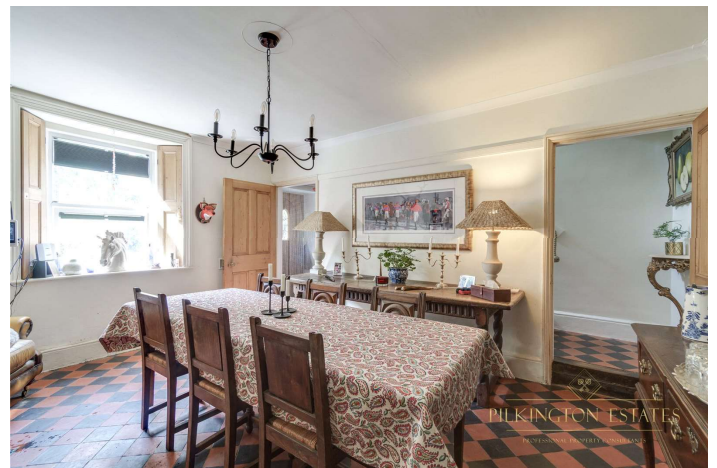
**Bampton, Tiverton,
EX16**
Offers Over: £550,000

Tucked away in the historic village of Bampton is what can only be described as a secluded paradise. A gated driveway leads to the home, which is set in the most peaceful and serene surroundings. The mesmerising detached cottage has been impeccably and tastefully restored to an inspiringly elegant standard.

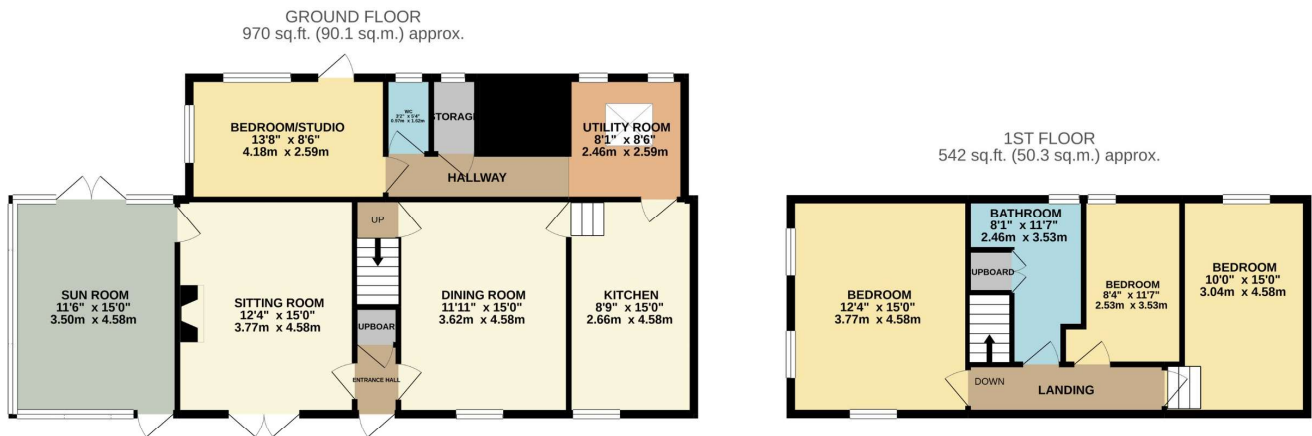
The interior design and flow of this home has been intelligently configured to create spacious and free-flowing space for all of the family to enjoy, as well as making a perfect space for entertaining guests. With a spacious sitting room overflowing with Victorian charm and a dining room with an Aga, this home seamlessly blends period features with modern fixtures, also boasting a beautiful sun room with slate flooring, creating a wonderful space to enjoy a sunny day.

Upstairs, three double bedrooms provide spacious accommodation and all are overflowing with the same charm that can be found throughout the property whilst all being comfortable and fresh, in particular the master bedroom which has been decorated to an impeccable standard and is flooded with light due to intelligently placed dual-aspect windows. Finishing the upstairs accommodation superbly is a modern and newly fitted shower room.

Externally, the property is approached by a gravel gated drive and benefits from expansive gardens, with various spots for entertaining as well as a large lawn. This property also benefits from a hot tub room, a summer house with power, a tool shed and also three stables and a tack room, making this a wonderful equestrian facility.







TOTAL FLOOR AREA : 1512 sq.ft. (140.5 sq.m.) approx.

Whilst every attempt has been made to ensure the accuracy of the floorplan contained here, measurements of doors, windows, rooms and any other items are approximate and no responsibility is taken for any error, omission or mis-statement. This plan is for illustrative purposes only and should be used as such by any prospective purchaser. The services, systems and appliances shown have not been tested and no guarantee as to their operability or efficiency can be given.
Made with Metropix ©2021

Pilkington Estates - Plymouth
Third Floor, Unit 7, Sutton Harbour, Plymouth
Devon, PL4 0DN

T: 01752 729777
E: jon@pilkingtonestates.co.uk
www.pilkingtonestates.co.uk

Jet Software Ltd. Registered in England and Wales - 09408958
Registered Office: Third Floor 67-74 Saffron Hill, London, EC1N 8QX

Disclaimer

Every attempt has been made to ensure accuracy, however these property particulars are approximate and for illustrative purposes only. They have been prepared in good faith and they are not intended to constitute part of an offer of contract. We have not carried out a structural survey and the services, appliances and specific fittings have not been tested. All photographs, measurements, floor plans and distances referred to are given as a guide only and should not be relied upon for the purchase of any fixture or fittings. Lease details, service charges and ground rent (where applicable) are given as a guide only and should be checked prior to agreeing a sale.