




PILKINGTON ESTATES
PROFESSIONAL PROPERTY CONSULTANTS

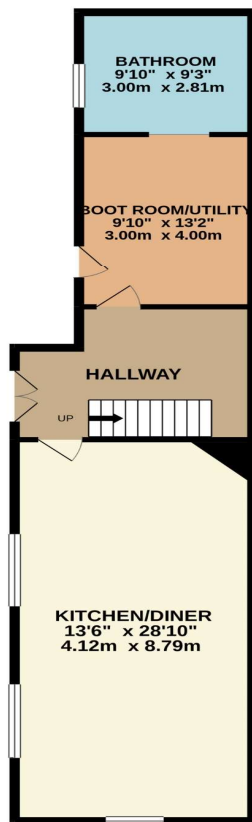
Antony Passage, Saltash, PL12

Offers Over: £900,000

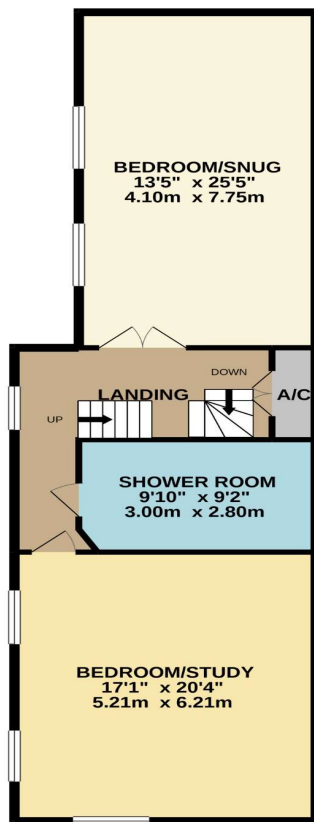
Freehold

Antony Passage, Saltash, PL12

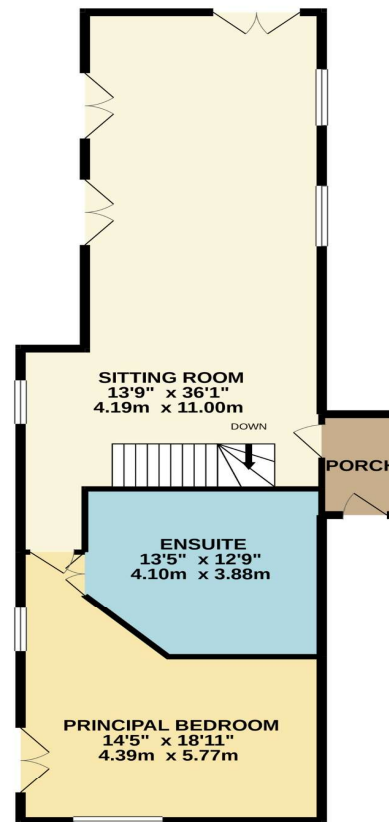
LOWER GROUND
729 sq.ft. (67.7 sq.m.) approx.



GROUND FLOOR
955 sq.ft. (88.7 sq.m.) approx.



ENTRANCE LEVEL
989 sq.ft. (91.9 sq.m.) approx.



TOTAL FLOOR AREA : 2673 sq.ft. (248.3 sq.m.) approx.





Pilkington Estates - Plymouth

Third Floor
Unit 7
Sutton Harbour
Plymouth
Devon
PL4 0DN

T: 01752 729777

E: jon@pilkingtonestates.co.uk

www.pilkingtonestates.co.uk

Jet Software Ltd. Registered in England and Wales - 09408958
Registered Office: Third Floor 67-74 Saffron Hill, London, EC1N 8QX

Disclaimer

Every attempt has been made to ensure accuracy, however these property particulars are approximate and for illustrative purposes only. They have been prepared in good faith and they are not intended to constitute part of an offer of contract. We have not carried out a structural survey and the services, appliances and specific fittings have not been tested. All photographs, measurements, floor plans and distances referred to are given as a guide only and should not be relied upon for the purchase of any fixture or fittings. Lease details, service charges and ground rent (where applicable) are given as a guide only and should be checked prior to agreeing a sale.