

Boundary Place, Plymouth, Devon, PL6

Offers Over: £120,000

Leasehold

This open-plan style contemporary apartment is the dream location for any buyer regularly commuting or perhaps working in the North of the City. The property is beautifully stylish and has a modern finish throughout with a fitted kitchen, fresh family bathroom and an immaculate ensuite shower room. As the apartment is situated on the second floor, the home offers an attractive

Accommodation

Communal Entrance Communal door leading into communal entrance hallway, stairs give access to second floor landing where apartment is located.



Entrance Porch 3'7" x 3'5" (1.1m x 1.04m). Laminate flooring, door into entrance hallway.

Entrance Hall 12'7" x 3'5" (3.84m x 1.04m). Carpet flooring, loft access, doors into:



Lounge / Dining Room 21'7" x 10'4" (6.58m x 3.15m). Max measurements. Carpet flooring, double glazed windows to front, patio doors onto Juliette balcony, TV point, wall mounted radiator, leads into kitchen.



Kitchen 9'4" x 8'6" (2.84m x 2.6m). Fully fitted kitchen with a range of matching wall and base units, roll edge work-tops, part tiled walls, tiled flooring, space and plumbing for washing machine, integrated stainless steel sink and drainer unit, integrated electric oven, integrated gas hob with extractor over, space for fridge-freezer, double glazed window to rear, wall mounted radiator.

Bedroom 9'7" x 8'6" (2.92m x 2.6m). Carpet flooring, double glazed window to rear, TV point, door into ensuite.





Ensuite Shower Room Tiled flooring, shower cubicle, low level WC, wash hand basin, part tiled walls.

Charges:

Ground rent: £250 per year.

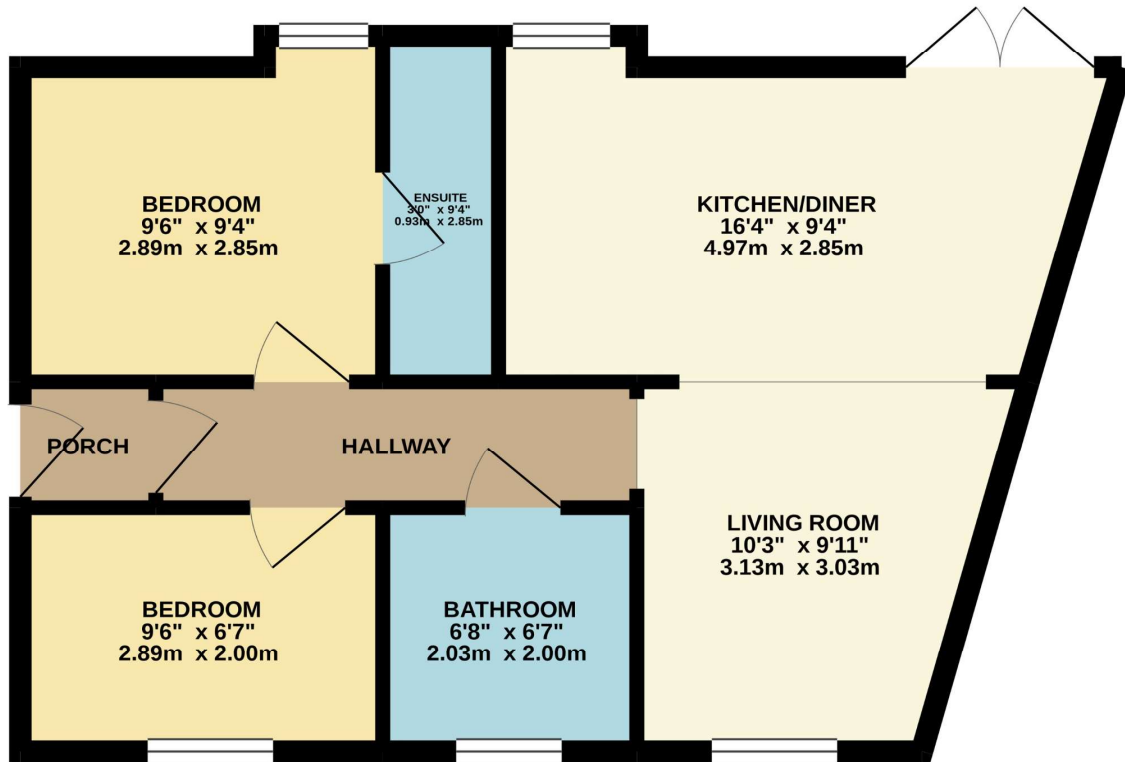
Service Charge: £1,260 per year.

Bedroom 9'6" x 6'7" (2.9m x 2m). Carpet flooring, double glazed window to front, wall mounted radiator.

Bathroom 7' x 6'7" (2.13m x 2m). Tiled flooring, part tiled walls, low level WC, wash hand basin, bath with mixer taps over, shower over the bath, wall mounted radiator, double glazed window to front.

Parking The apartment has a private allocated parking space.

GROUND FLOOR
491 sq.ft. (45.7 sq.m.) approx.



TOTAL FLOOR AREA: 491 sq.ft. (45.7 sq.m.) approx.

Whilst every attempt has been made to ensure the accuracy of the floorplan contained here, measurements of doors, windows, rooms and any other items are approximate and no responsibility is taken for any error, omission or mis-statement. This plan is for illustrative purposes only and should be used as such by any prospective purchaser. The services, systems and appliances shown have not been tested and no guarantee as to their operability or efficiency can be given.
Made with Metropix ©2020

Pilkington Estates - Plymouth
Third Floor, Unit 7, Sutton Harbour, Plymouth
Devon, PL4 0DN

T: 01752 729777
E: jon@pilkingtonestates.co.uk
www.pilkingtonestates.co.uk

Jet Software Ltd. Registered in England and Wales - 09408958
Registered Office: Third Floor 67-74 Saffron Hill, London, EC1N 8QX

Disclaimer

Every attempt has been made to ensure accuracy, however these property particulars are approximate and for illustrative purposes only. They have been prepared in good faith and they are not intended to constitute part of an offer of contract. We have not carried out a structural survey and the services, appliances and specific fittings have not been tested. All photographs, measurements, floor plans and distances referred to are given as a guide only and should not be relied upon for the purchase of any fixture or fittings. Lease details, service charges and ground rent (where applicable) are given as a guide only and should be checked prior to agreeing a sale.